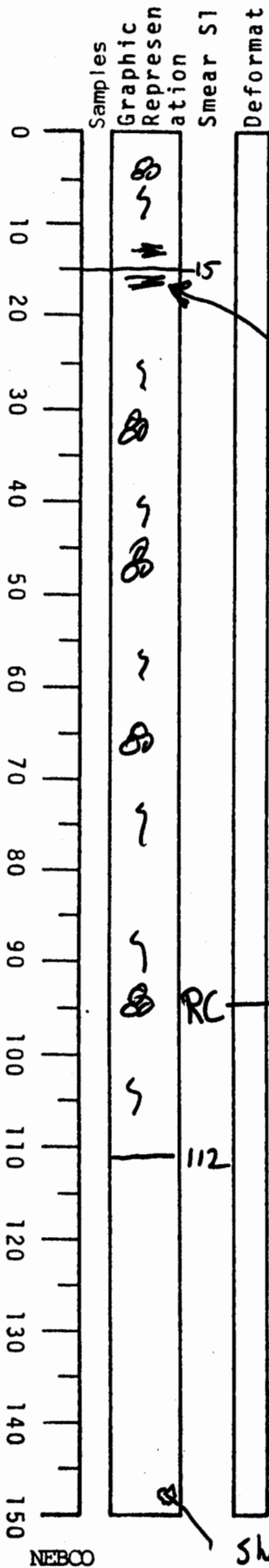


# VISUAL CORE DESCRIPTION

1 of 3

LOCATOR				SAMPLE NO.		SEC.
G97	-			PC	02	1 1/2
STATION#					OBSERVER	
					RED	



0 - ~15 dark yellowish  
brown calc clay  
MNOX stains 12-13 15-17 cm  
10YR 4/2 - A abundant Ⓢ

15 - ~38 dk yellowish bn calc  
clay 10YR 4/2 but  
slightly lighter than 0-15  
lower contact gradational  
forams common to abdt. - decrease  
downward  
some burrows

38 - 112 olive gray (5Y 4/1)  
calc clay -  
forams generally  
abdt.

RC - 95 cm → slight burrows  
below 100 cm = lack of *G. manardii*  
possible Holocene / Pleist boundary  
gradational contact

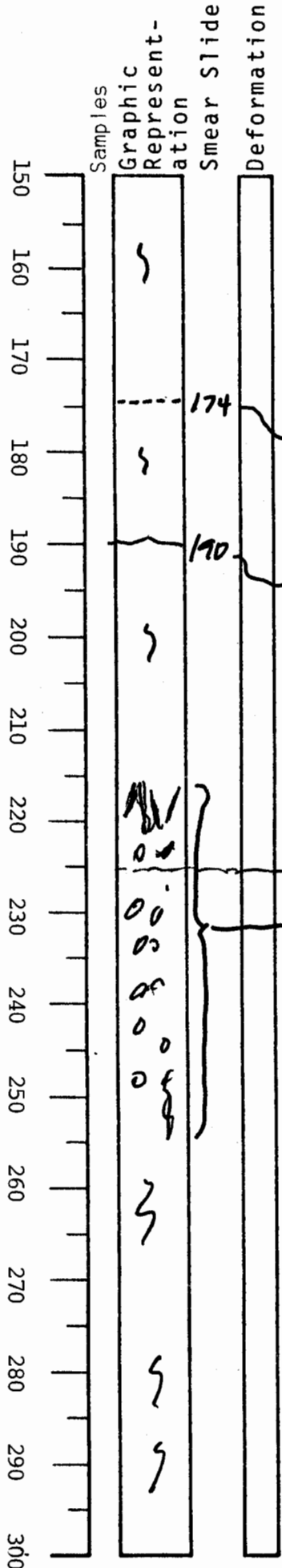
112 - 150 cm  
smooth olive gray clay  
5Y 3/2

homogeneous  
rare burrows

white  
shell frag at 150 cm (or possible alga)

VISUAL CORE DESCRIPTION

LOCATOR				SAMPLE NO.		SEC.
G97-6				PC	02	324
STATION#					OBSERVER	
					PED	



150-190 ~~str~~ smooth olive gray

174 thin <1mm st lamina v dk gray

clay 5Y 3/2  
 section may have v. thin color laminae which are dk gray to black

contact somewhat irregular

190-~225  
 olive gray clay 5Y 4/1  
 lighter below 205  
 burrows common

225 gradational contact

225-~260 light gray burrows common  
 steeply dipping vertical burrows at top 205-225

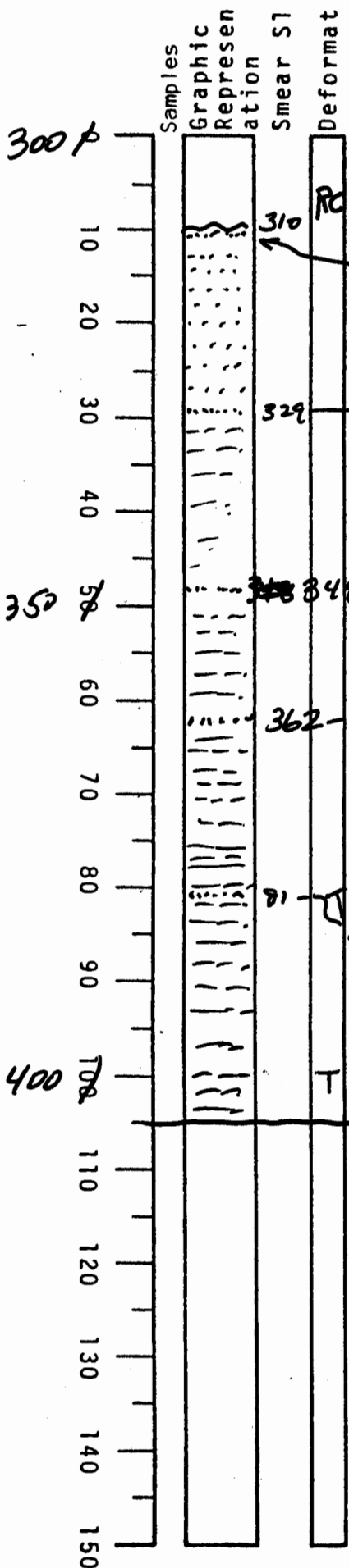
225-270 olive gray clay  
 5Y 3/2  
 burrows common

270-300  
 olive gray clay  
 5Y 4/1  
 burrows common

VISUAL CORE DESCRIPTION

3033

LOCATOR				SAMPLE NO.		SEC.
6	9	7	-	6	PC	025#6
STATION#					OBSERVER	
					TED	



308-310 cm - just above TBT  
 300-310 olive gray clay  
 310 5Y4/1, as above  
 310 0.5 cm silt lamina  $\phi$  irreg. thickness  
 310-329 - at least 30 silt lams  $\leq$  1mm thick  
 329 0.5 cm st lamina  
 329-362 ~ 65 silt laminae  
 348-348 3mm st lam  
 362-364 2 cm thick silt bed  
 364-405 > 70 st lams  
 371 0.5 cm lam  
 405 bottom of Core

310 to 405  
 olive gray clay 5Y4/1, with numerous silt laminae - most are  $\leq$  1mm thick  
 some thicker than 1mm as noted

310-405 has at least 125 st lams.

Note: Samples every  $\approx$  20 cm  
 Note: Vane shear test done every 5 cm.

Bulk density correlates w/ lith change  
 Dark gray clay generally lacks  $\phi$ 's = Turb mud?