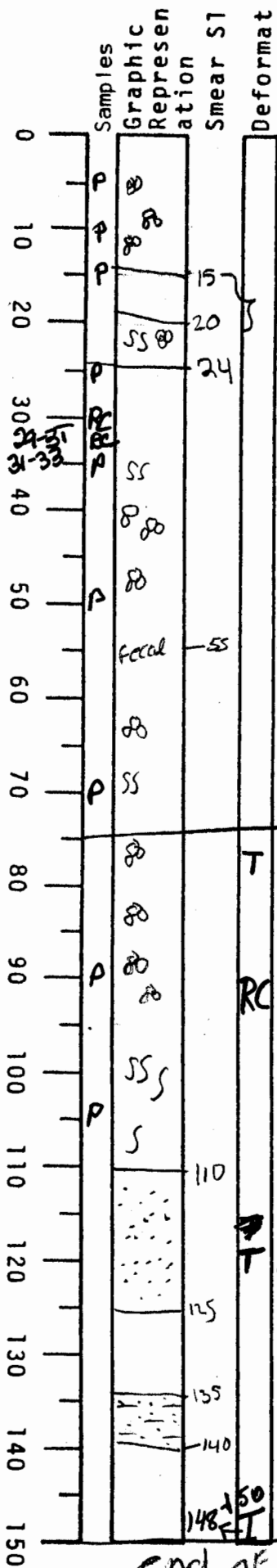


VISUAL CORE DESCRIPTION

LOCATOR				SAMPLE NO.			SEC.
G	9	7	-6	P	C	03	12
STATION#						OBSERVER	
						Gita	



0-24 cm. dark yellowish brown 10YR 4/2 clay. Forams abundant

15-20 banded darker clay (manganese color banding) olive black 5Y 2/1

24-108 olive gray 5Y 4/1 clay
Forams abundant, slightly burrowed
fecal pellets at 55

end of section 1

T 75-77 cm
95 cm - *G. menardii* rare to absent
90 cm common *G. menardii*

RC 91-93 cm for poss. H/P boundary

108-109 silt laminae

110-125 dark greenish gray 5GY 4/1 silt
mainly silt, appear to have some lam. of clay - difficult to determine thickness of clay laminae

125-135 dark greenish gray 5GY 4/1 clay
No burrows (or few if any)

135-140 dark greenish gray silt 5GY 4/1

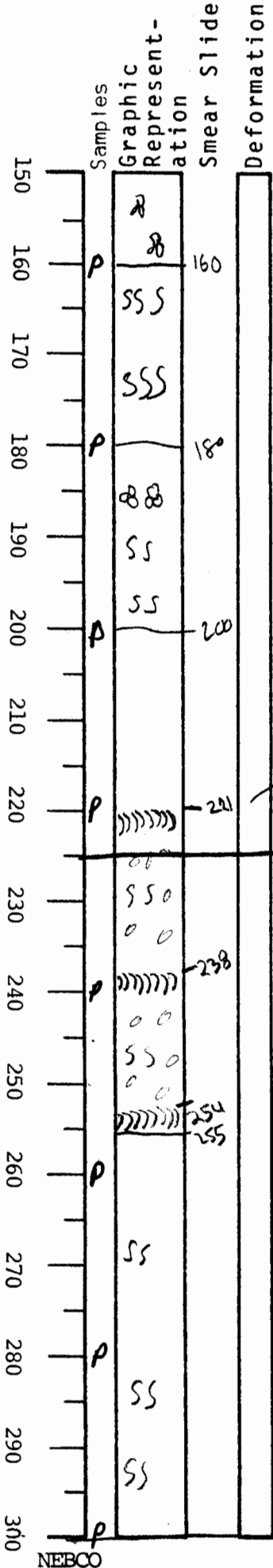
145-150 silt filled burrows in dark greenish gray 5GY 4/1 clay (possibly)

110-125 silt

VISUAL CORE DESCRIPTION

2 of 4

LOCATOR				SAMPLE NO.		SEC.
G	9	7	-6	PC	03	34
STATION#					OBSERVER	
					Gita	



150-160 olive gray 5y 4/1 clay, few forams, NO burrowing

160-180 olive gray 5y 4/1 moderate burrowing - small burrows (1/2 cm)

180-200 dark yellowish brown 10YR 4/2 clay moderate burrowing, few forams,

200-255 olive gray 5y 3/2 clay abundant burrows, distinctive 1/2 cm. wide burrows at 221 and 238 and 254, burrows w/ common shell fragments, larger burrows in general burrows filled with light olive grey clay end of section 3

202-212 large burrows with olive brown and shell fragments (1mm.)

smaller burrows common 222-255 also lt olive brown

255-300 ft. olive gray 5y 4/1 clay moderately burrowed few forams if any

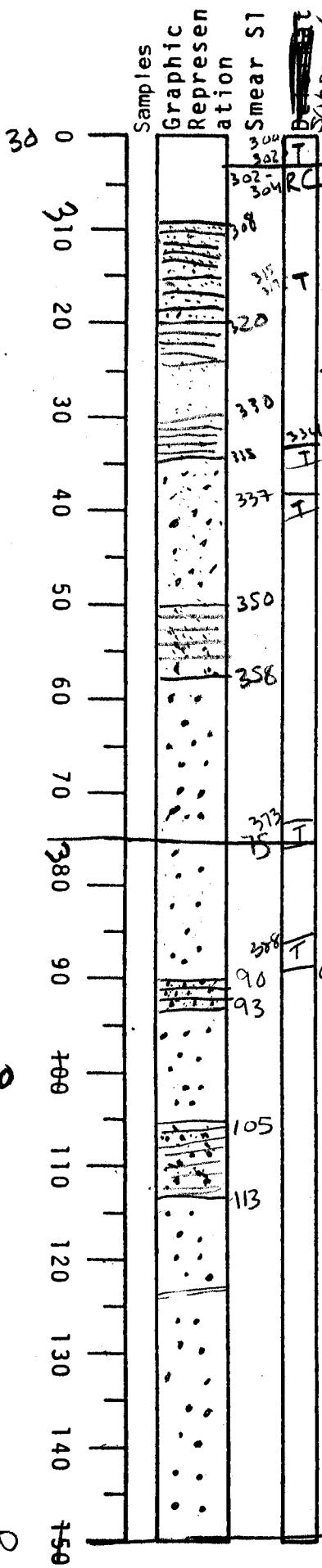
290-295 burrows with possible fecal matter

end of section 4

VISUAL CORE DESCRIPTION

3 of 4

LOCATOR				SAMPLE NO.		SEC.
G9	7	-	6	PC	035+6	
STATION#					OBSERVER	
					Gita	



300-308 olive gray sy 3/2 clay

308-320 olive gray sy 3/2 silty clay
clay laminae 3-4 mm. olive gray sy 4/11

320-335 olive gray sy 3/2 v. fine sand
1-4 mm light olive gray clay laminae at 320-335

335-350 massive olive gray sy 3/2
v. fine sand

350-358 olive gray sy 3/2 fine sand
3-4 mm light olive gray clay laminae

358-375 massive olive gray sy 3/2
fine sand (same as 350-358)
end of section 5

375-450 Mostly massive olive gray sy 3/2
fine sand w/ some clay laminae (see below)

90-93 clay laminae 3-mm wide

105-113 clay laminae 1-3 mm wide
Light olive gray sy 5/2

123 clay laminae 1 mm wide

end of section 6

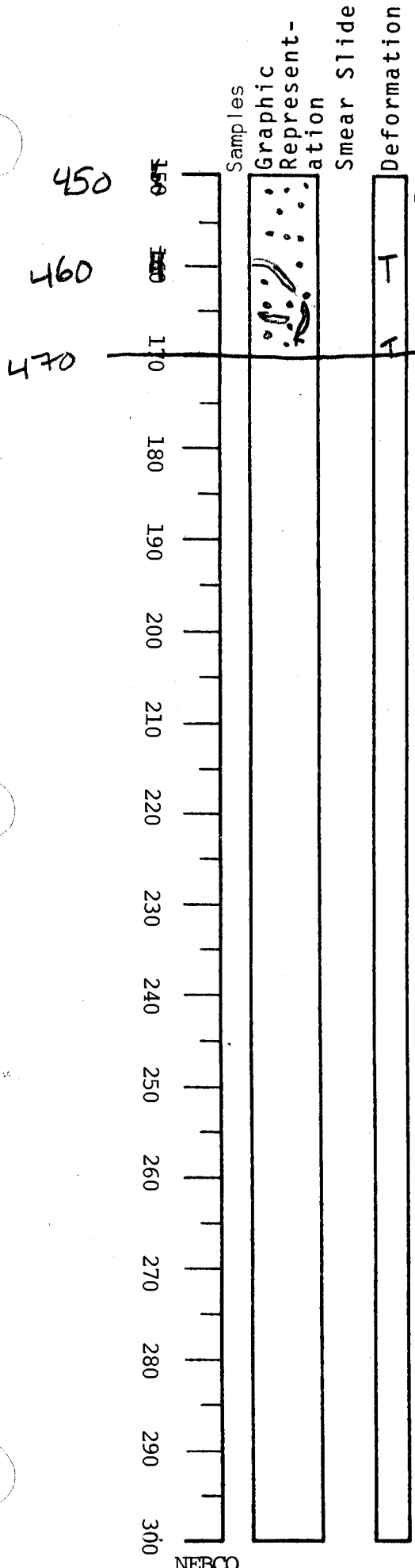
400

450

NEBCO

VISUAL CORE DESCRIPTION

LOCATOR				SAMPLE NO.			SEC.
G	9	7	-6	P	C	0307	
STATION#					OBSERVER		
					GTA		



450-460 med-fine sand, mostly massive olive gray 5Y 3/2
 3- thin clay laminae (2 mm) at 460 which does not appear across entire core - possible end of section 7 clay clast or flow in?
 460-470 Fine sand - massive olive gray 5Y 3/2

one possible sand layer from 310-470 with intermittent ^{sets} clay laminae 1-2 mm
 Variable sand size very fine to medium
 - also a possible interp of several episodes with basal 10-20 cm of massive sd & tail w/ clay & silt lam

Note wave shear every 5 cm except possibly in sd layers
 @ samples every ≈ 20 cm except in sd layer