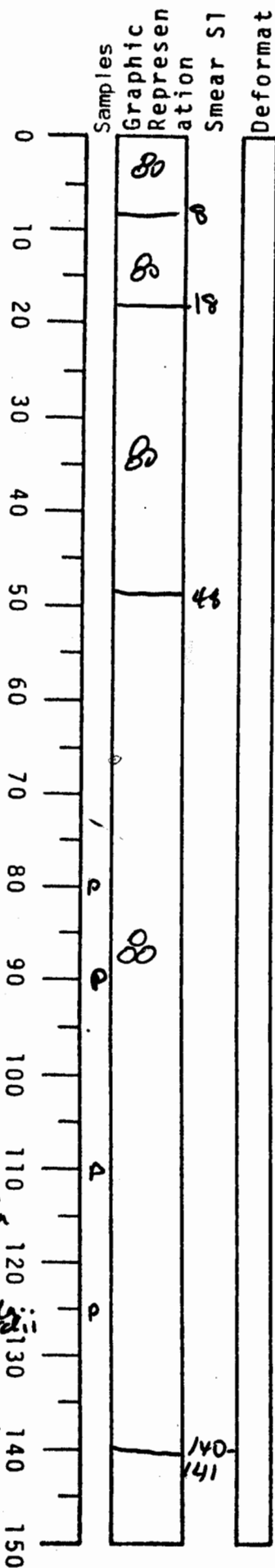


VISUAL CORE DESCRIPTION

LOCATOR				SAMPLE NO.		SEC.
G97	-	6		PC	05	1#2
STATION#					OBSERVER	
					JEA	



0-~8cm dk yellowish bn
10YR 4/2
forams common

0-18cm Sediment very mushy -
disturbed

8-18 grades from dk yellowish bn into
olive gray 5YR 4/1

18-48 olive gray 5YR 4/1 but
highly stained and streaked
black N2 by hydrotroilite
(reducing smell strong)
Some strange vertical streaks
unstained by hydrotroilite
(1mm wide) of unknown origin
forams common

48-140 olive gray clay 5Y 4/1
slight to moderate burrowed
forams common

140-141 gently dipping irregular contact

141-150 + med gray NS clay
see below

80 G. men
abdt

90 G. men
abdt

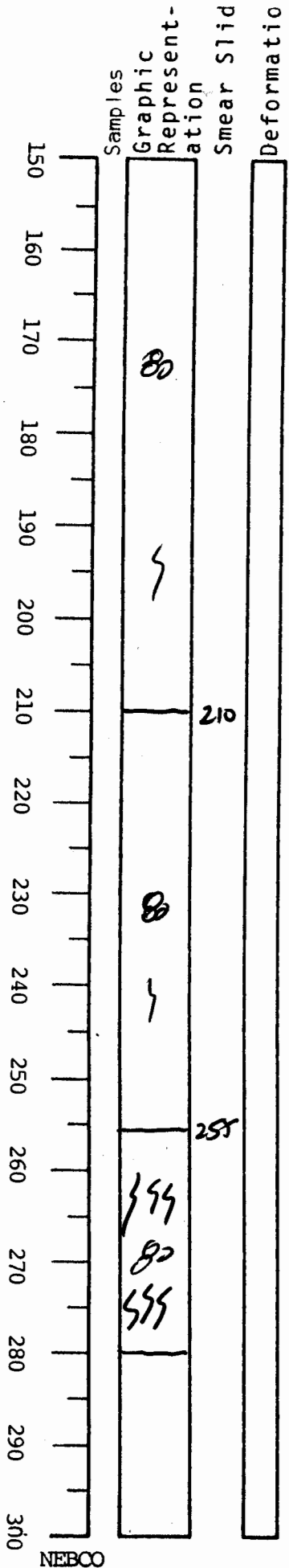
110 G. MEN
COMMON
G. tumida

125 + many
Mena. retii
COMMON

135 G. men
G. Tum
absent

VISUAL CORE-DESCRIPTION

LOCATOR				SAMPLE NO.		SEC.
G97	-6			PC	05	344
STATION#				OBSERVER		
				JED		



141 - ~210
 med. gray clay N5
 slight to moderate burrows
 forams common
 grades to slightly darker gray
 at ~210

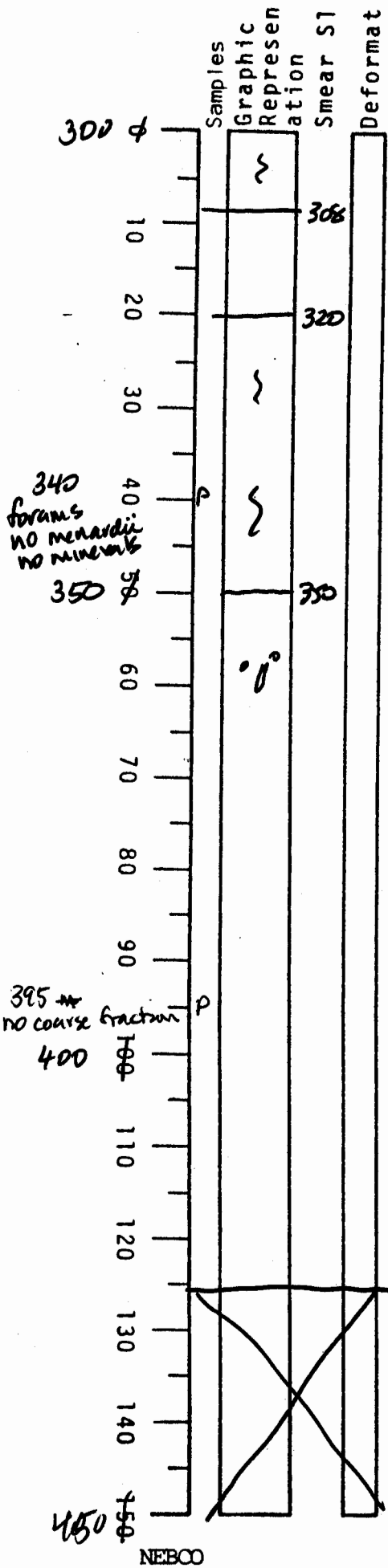
210 - 255
 medium dk gray clay N4
 slight burrows
 forams common

255 - 280
 intensely burrowed gray clay
 colors range between N5
 and N4
 forams common

280 - 300
 med gray N5 clay
 see below

VISUAL CORE DESCRIPTION

LOCATOR				SAMPLE NO.		SEC.
G97	-	6		PC	05	526
STATION#					OBSERVER	
					JSD	



280-308

med gray clay N5

Slightly burrowed

308-320 smooth homogeneous
structureless ~~to~~ med gray
clay N5

320-~350 med
gray clay N5

Slightly burrowed

350 to base 426

Smooth structureless homogeneous
med gray clay N5

Slight burrowing near top incl
vertical burro at 357-362

↓
[NOTE: THIS MAY BE A MUD TURBIDITE
OR TOP OF A GRADED TURBIDITE]

308-320 may be as well

426 bottom of core