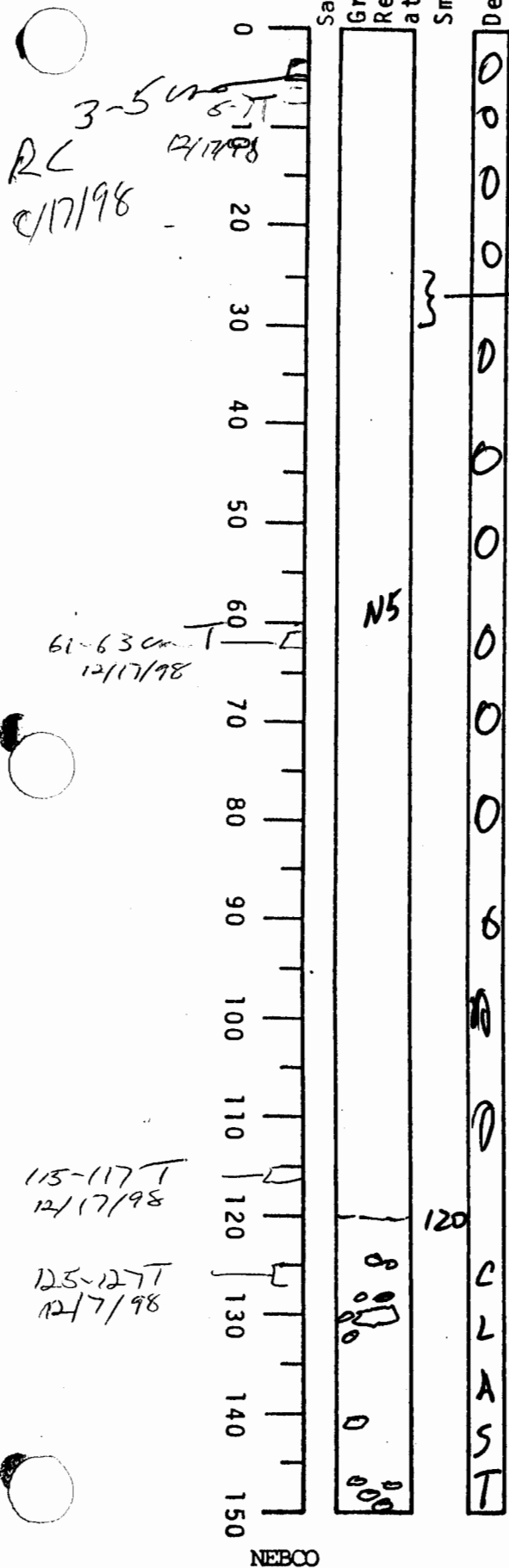


# VISUAL CORE DESCRIPTION

LOCATOR				SAMPLE NO.		SEC.
G9	6			PC	0612	2
STATION#					OBSERVER	
					JED	



TOP - no brown sediment section but brown wet watery on sides down to 10-20 indicates brown clay section was present above but lost during coring

25-30 slightly darker gray stains

0 - ~ 120

Very soupy deformed med gray clay (N5)

no apparent bedding or structure

forams appear to be present - possibly common

By 120cm definitely chaotic clasts + debris flow characteristics

~ 120 - 150 slightly less soupy med gray clay (N5)

There appear to be possible lighter and darker gray mud clasts (?)

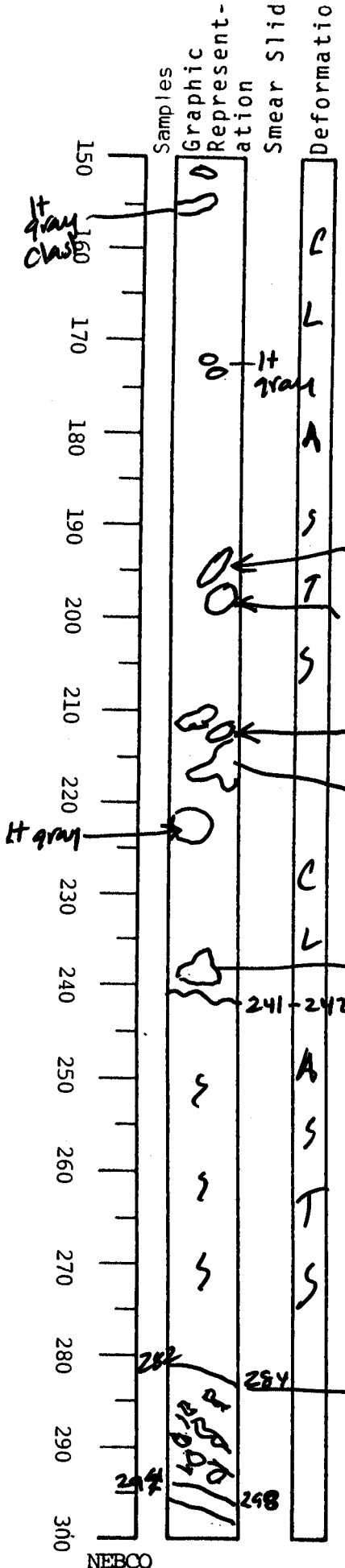
This interval appears to be the top of the next interval 150 - 241 below

[NOTE TDP TO ~ 320 or 330 APPEARS TO BE DEBRIS FLOW DEPOSIT]

# VISUAL CORE DESCRIPTION

344

LOCATOR				SAMPLE NO.			SEC.
G97-6				PC	06	24	
STATION#					OBSERVER		
					JED		



(~120) 150 - 241

med gray clay with numerous mud clasts of variegated size & gray color. shades of clasts range from dk gray N3 to med light gray N6 and are mainly rounded and deformed somewhat (a few are shown)

242 - 282

stiffer med gray (N5) interval of clay - scattered burrows appears undeformed but may be a large clast

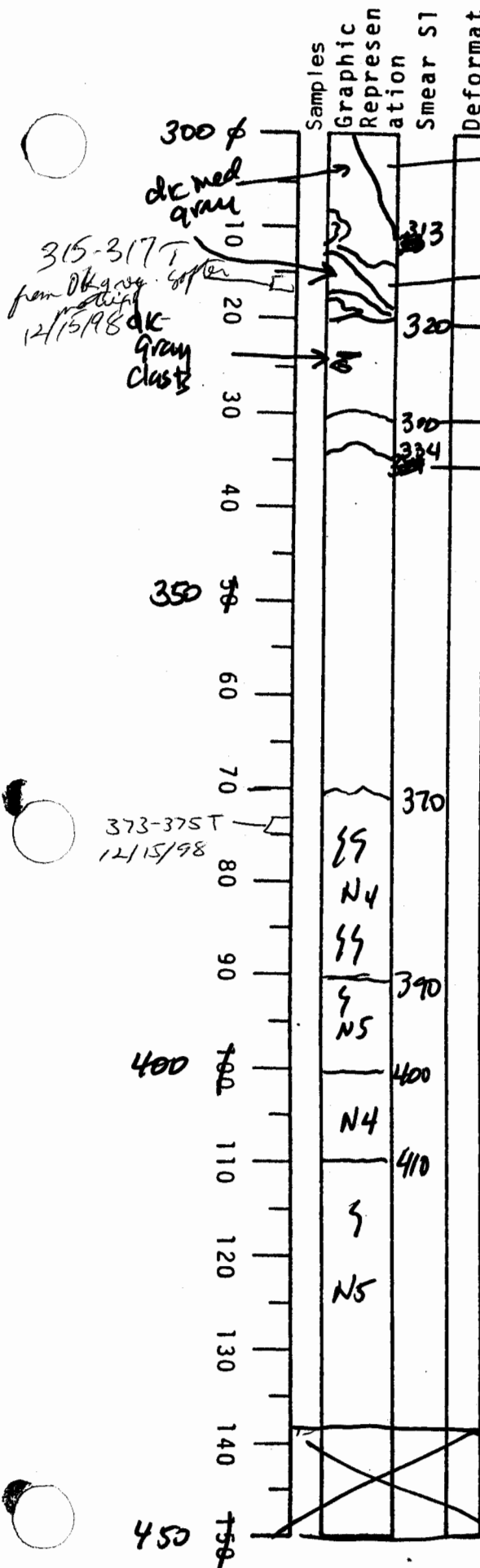
dipping contact

284-294 med w... dk gray (N4) clay with apparent highly deformed med gray (N5) clasts 294-298 to 300 moderately dipping gray beds

NEBCO

# VISUAL CORE DESCRIPTION

LOCATOR				SAMPLE NO.		SEC.
G	9	7	-6	PC	06	526
STATION#					OBSERVER	
					JED	



med gray

0-20 Steeply dipping flowed contacts

med gray med (N4) and dk med (N5)

320 flat undulating contact gray clay look like large deformed clasts

330 subtle contact

334 subtle irreg contact

20-34 med gray clay clasts oriented flat about 323-25cm

[NOTE: BELOW ~330 SEDTS APPEAR UNDEFORMED]

334 - ~370 med gray N5 clay burrows rare appears undeformed

370-373 Sample for MS but highly fractured 2 April, 98 - work by gas

370-390 med dk gray clay N4 well burrowed by lighter gray

390-400 med gray clay N5 slightly burrowed

400-410 med dk gray (N4) slight burrows

410-438 med gray clay N5 burrows to 422

NOTE: ~320 to base 450 sedts are highly fractured with small cracks due to gas

438 base

~~450 base~~