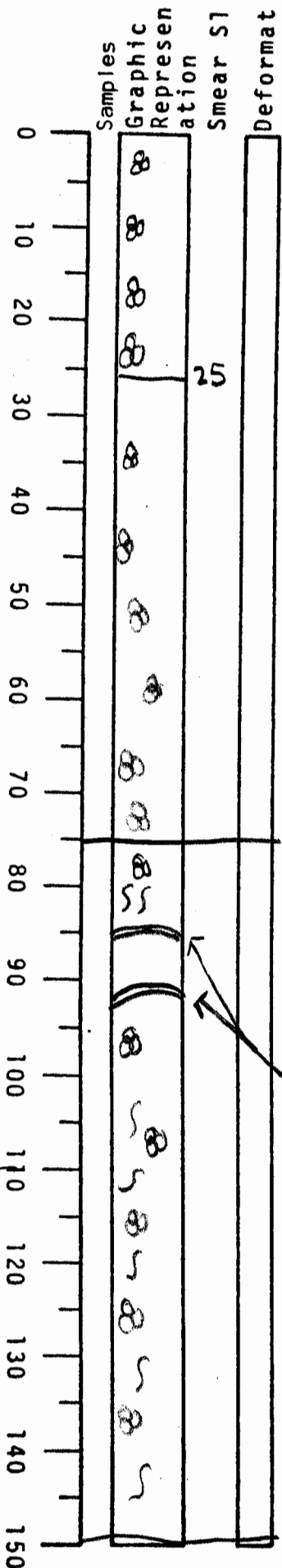


# VISUAL CORE DESCRIPTION

LOCATOR				SAMPLE NO.		SEC.	
G	9	7	-	P	C	-	8
							142
STATION#					OBSERVER		
					Gita		



0-25 VEM soupy almost liquid  
 darkish yellow brown 10YR 4/2 clay  
 abundant forams  
 no visible structures (see note)

25-75 darkish yellow brown (10YR 4/2) clay mixed with swirls of moderate yellowish brown 10YR 5/4 uneven color. NO visible structures (see note)  
 abundant forams

note: section 1 did not split well structures may have been obliterated. High water content.  
 end of section 1

75-153 dark yellowish brown 10YR 4/2 clay. Forams present  
 75-105 heavily burrowed - burrows upto 1cm  
 105-153 heavily burrow with larger burrows upto 4cm

at 85 & 93 thin (1cm wide) band of iron oxide staining

75-153 all burrows filled w/ darker gray clay.  
 80 - common Menardii  
 110 - rare Menardii - possibly H/PL?  
 120 - absent Menardii  
 Boundary at 115cm

H/PL boundary below 120 cm.  
 end of section 2

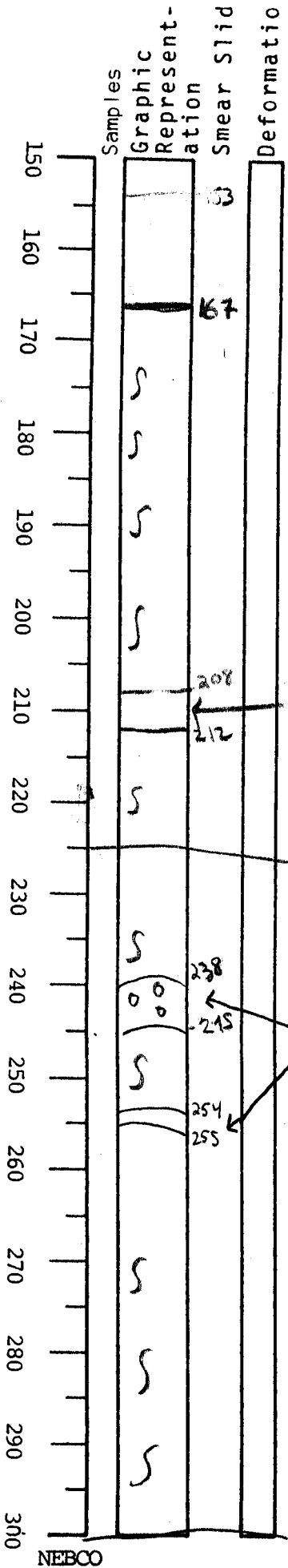
common G. Menardii

rare Menardii tumida common

absent rare Menardii tumida common

# VISUAL CORE DESCRIPTION

LOCATOR					SAMPLE NO.		SEC.	
GA	7	-	6		PC	-	8	34
STATION#						OBSERVER		
						Gita		



153-167 gradational contact

167-300 olive gray SY 4/1 clay  
 Forams common  
 uneven coloring lighter & darker olive gray  
 lighter w/depth.

167-230 heavily burrowed - filled w/ darker  
 gray clay

230-300 less burrowing

208-212 abundant white shells

end of section 3

238-245 smoother more pinkish clay layer  
 254-255 (color chart can't distinguish color)  
 In upper (238-245) layer - gray clay clasts

end of section 4

# VISUAL CORE DESCRIPTION

LOCATOR				SAMPLE NO.		SEC.
G	9	7	-	P	C	5
STATION#				OBSERVER		
				Gta		

300-388 olive gray

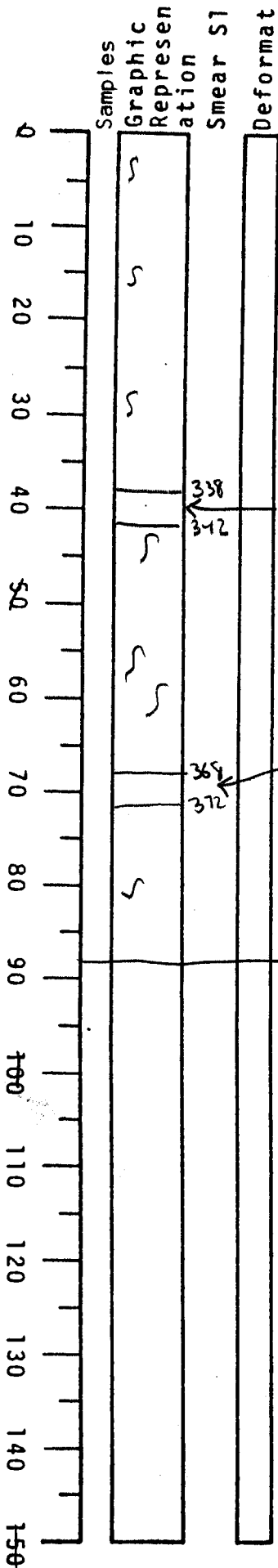
SY 4/1 clay

moderately burrowed - filled with darker gray clay.

338-342 cluster of small (upto 7 cm.) oval burrows oriented vertically in core.

368-372 cluster of small oval shaped burrows oriented vertically in core.

388 end of section 5



NEBCO

300

350

400

450