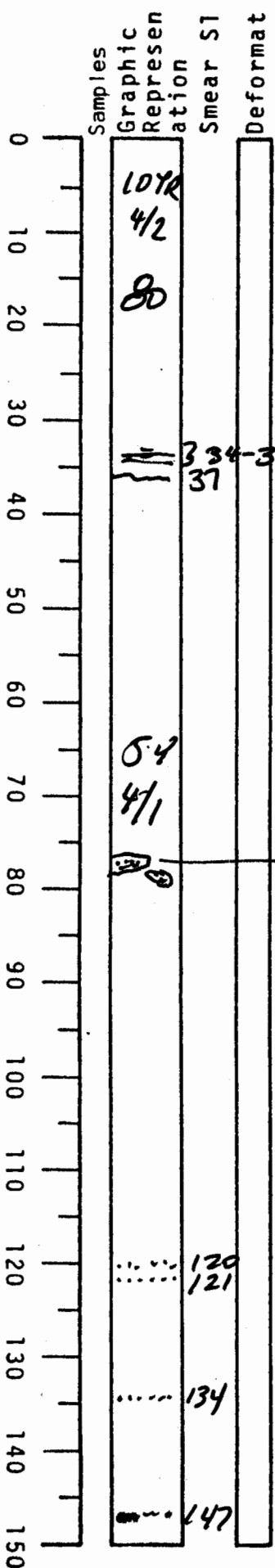


VISUAL CORE DESCRIPTION

1 of 3

LOCATOR				SAMPLE NO.			SEC.
G	9	7	-6	P	C	1/1	#2

STATION#				OBSERVER			
				Jed			



Some subtle MnOx stains in top 5cm

0-37 dark yellowish brown foram-rich clay grades into gray below

33-37 dk MnOx stains

37-~~134~~^{~134} is mostly

olive gray clay
5.4/1 appears to have scattered burrows
forams common

76-80 sd filled burrows?

120 & 121 1mm st lam

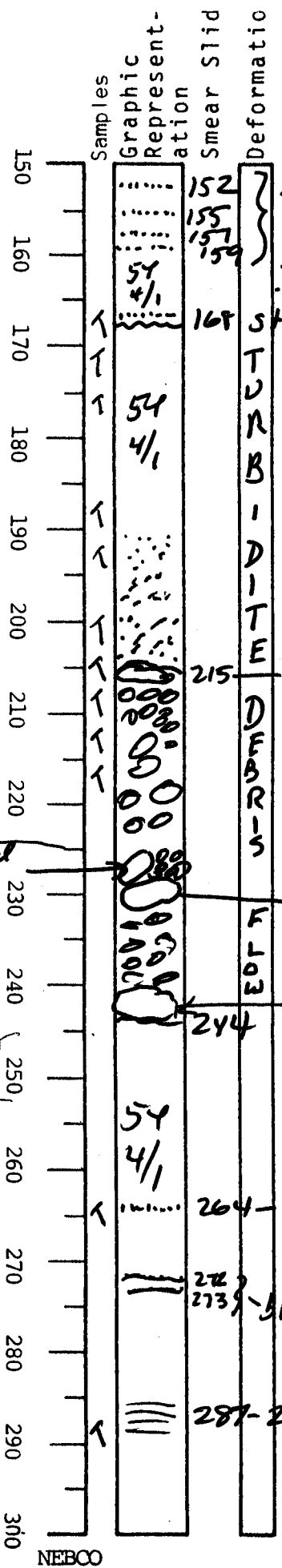
2mm st lam

3mm st lam

below 134 clay appears unburrowed with silt lam and v. thin color bands (<1mm so may be clay turbidites)

VISUAL CORE DESCRIPTION

LOCATOR				SAMPLE NO.		SEC.
G97	-	6		PC	11	344
STATION#					OBSERVER	
					JED	



st lam 9
<1mm

164-168 = graded bed - clay to st
st lam 3mm thick sharp base

150-168 olive gray clay homogeneous - turbidites?

168-215 - graded bed homogeneous olive gray clay at top grades into silty mud ~190 downward to silt and fine sd? at base

NOTE: TURBIDITE SITS ON TOP OF DEBRIS FLOW

sharp irreg base

215-244 mud clasts of various sizes and variegated colors mostly rounded

colors range from olive gray to light olive gray 5YR 4/1 to brownish gray 5YR 4/1 most clasts are stiff clay

end of section 3 tilted clast 5x4 cm

245-251 cm AMS was K2 checked 11/12/98

8x4 cm

large clast?

264 - silty clay 4mm lam w/ black organic? mult MUDX? 244 - base 300 is

272 273

black lams

olive gray laminated clay

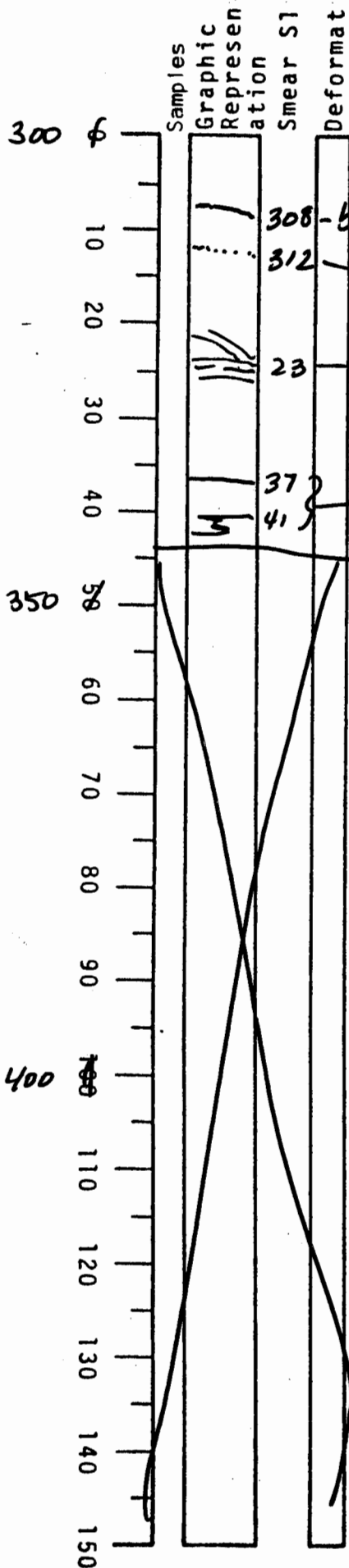
5 grayish brown silt clay lams 9cm lams between

numerous laminae & color bands - individual color lams <1 to a few mm thick

VISUAL CORE DESCRIPTION

1 of 3

LOCATOR				SAMPLE NO.		SEC.
897-6				PC	11	5
STATION#					OBSERVER	
					JSD	



308 - black material forms lam.
 312 - discontinuous 1mm st lam

23 - appears to be truncation - beds above dip steeper

37 }
 41 } 3374-43 -

344 base of core

300 - 344 olive gray laminated clay like
 244 - 300

5Y 4/1 laminae dip

striking grayish bn 5YR 3/2 (brick red) layer like above (287-290)