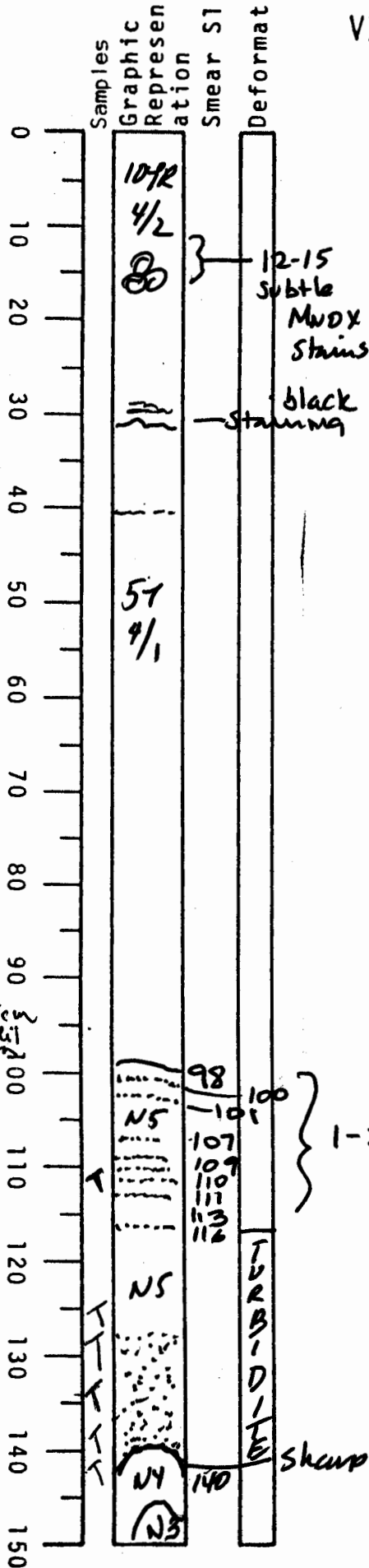


VISUAL CORE DESCRIPTION

1 of 3

LOCATOR				SAMPLE NO.			SEC.
G	9	7	-6	PC	1	2	1#2
STATION#						OBSERVER	
						TED	



0 - ~40
 dark yellowish brown
 foram-rich clay
 transitions gradually to
 olive gray clay by 50

~40 to 98
 olive gray clay
 foram rich
 slightly
 burrowed

98-116 ~~olive~~ medium gray clay (N5)
 with several
 st lam as
 noted

116-140 graded bed
 med gray clay - homogeneous
 at top becomes silty by 127 cm
 grades down into silt

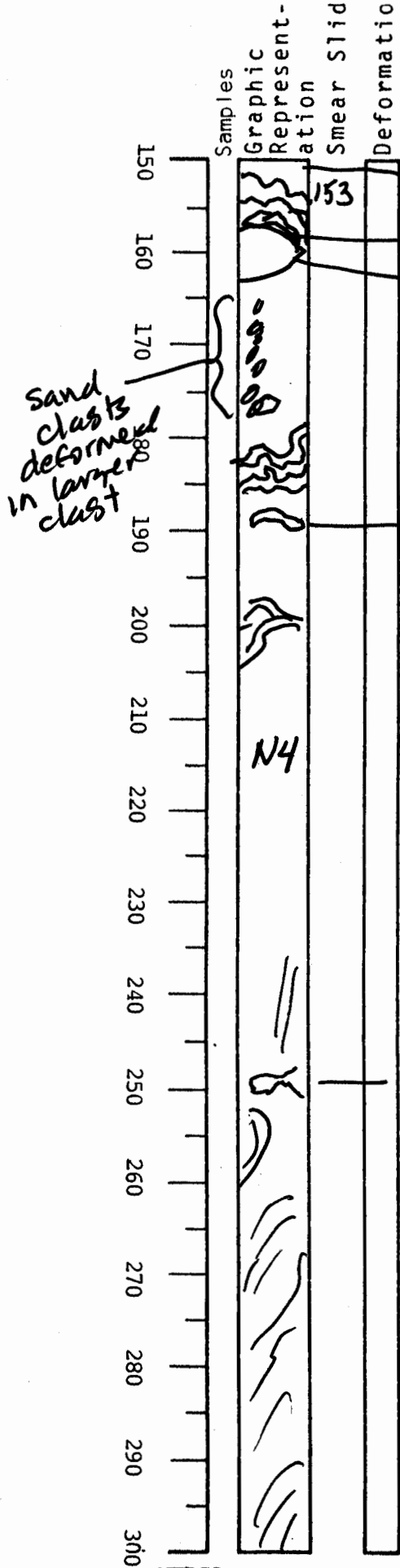
140-150 deformed
 mud clasts
 med dk gray N4
 and dk gray N3

~95cm
 q. menardii
 common

NEBCO

VISUAL CORE DESCRIPTION

LOCATOR				SAMPLE NO.				SEC.					
G	9	7	-6	PC		1	2	3	4				
STATION#								OBSERVER					
								JSD					

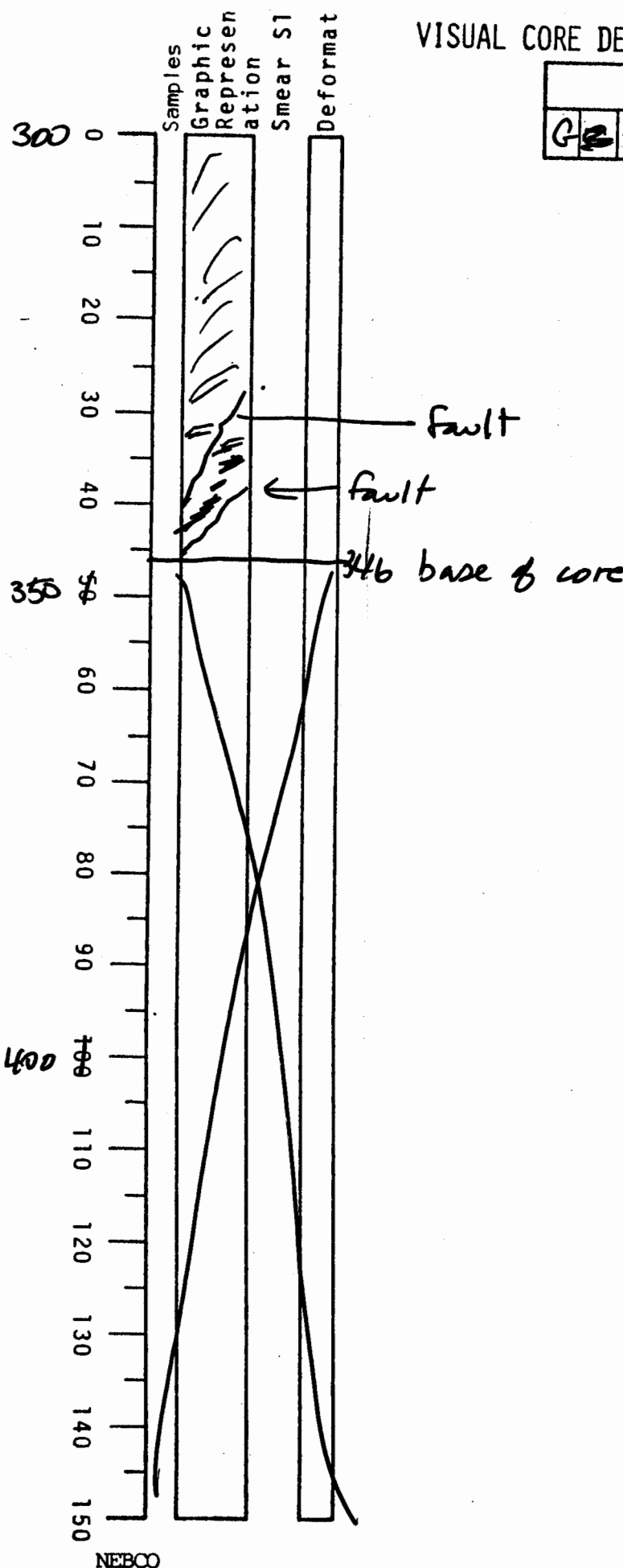


150 - 300 is deformed mud clasts and blocks of various shades of gray mainly med dk gray ~~N4~~ N4 ~~with~~ with some dk gray (N3) and med gray (N5) various structures shown

VISUAL CORE DESCRIPTION

3 of 3

LOCATOR				SAMPLE NO.		SEC.
G	97	-	6	PC	12	5
STATION#				OBSERVER		
				JED		



300-346 is continuation
of deformed beds
above

steeply dipping
colored layers
are ^{highly} deformed
and faulted
layers are
med dk gray
and black
N2