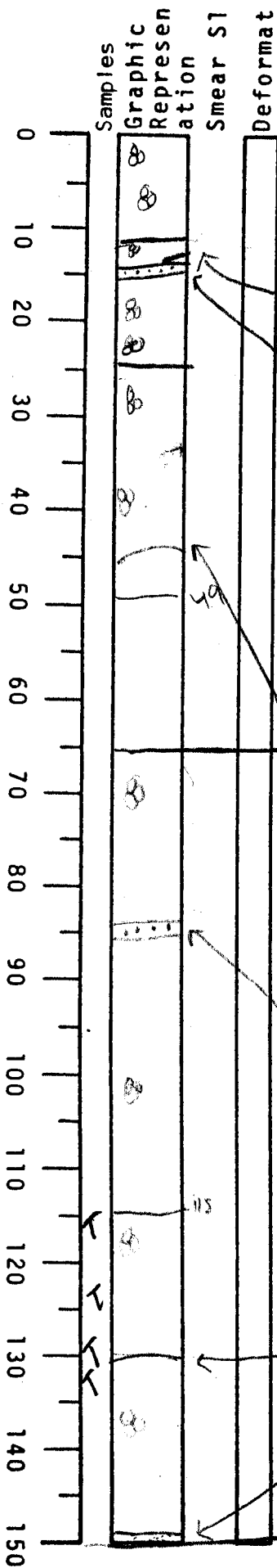


VISUAL CORE DESCRIPTION

1 of 3

LOCATOR				SAMPLE NO.			SEC.
09	7	-	6	PE	-	14	142
STATION#						OBSERVER	
						Gita	



0-10 dark yellowish brown 10YR 4/2 clay. Forams abundant. uneven color possibly due to manganese staining

11 cm. dark manganese stain band 1/2 cm wide

15-16 Foram sand

12-24 Light olive gray clay. Forams abundant. no structures

24 - manganese stained band 1 1/2 cm wide

26 - 49 dark yellowish brown 10YR 4/2 clay. Forams abundant. end of section 1

47 - possible iron oxide crust moderately indurated

49-115 olive gray clay SY 4/1. Structureless

84-86 Foram sand

115 - 150 olive gray SY 4/1 clay. Forams abundant. uneven color

115-135 organic in 763M

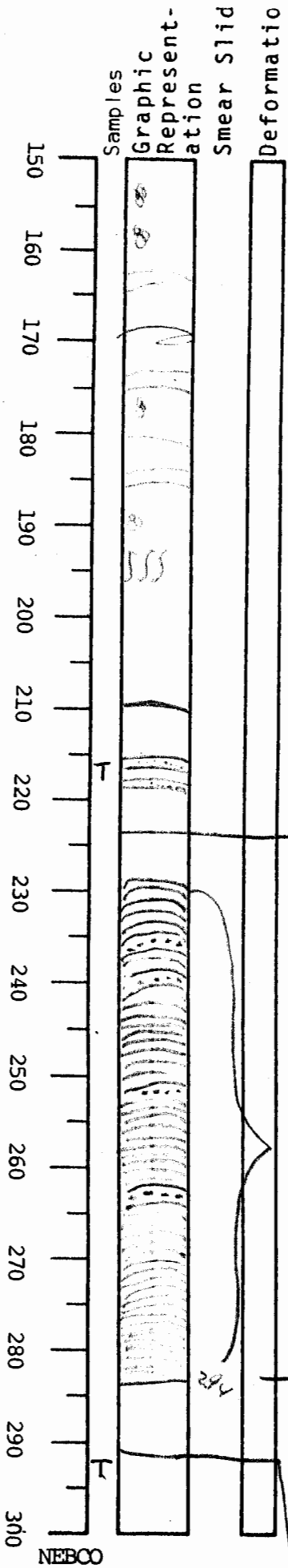
130 manganese staining

150 silt band

end of section 2

VISUAL CORE DESCRIPTION

LOCATOR				SAMPLE NO.			SEC.				
E	9	7	-	6	P	C	-	1	4	3	4
STATION#							OBSERVER				
							Gila				



150 - 284 olive gray clay SY 4/16
 Forams common subtle color banding
 bands of yellow

210 - 220 alternating layers of silt + clay
 mostly 1-3 mm wide at 217 2 wider
 bands of silt

end of section 3 (223 cm)

230 - 284 continuous, regular band of
 clay shanty different color 1-2 mm wide
 with bands of silt (darker gray)

The bands of silt widen w/ depth
 the band at 263 is the widest at
 upto 1 cm wide

then the band get narrower

269, sharp contact

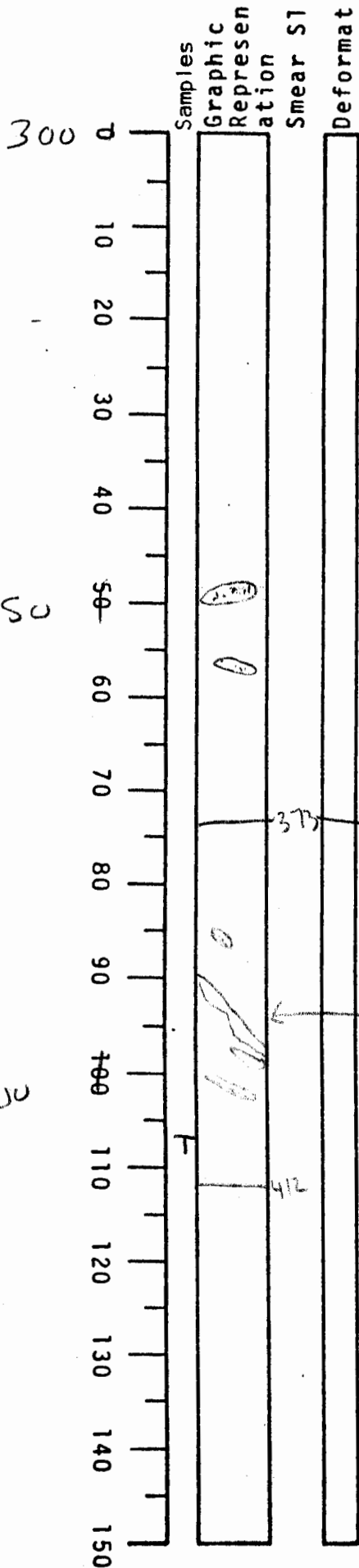
284 - 412 olive gray SY 4/16 clay
 structureless
 with some silt beds

end of section 4 possibly chaotic

VISUAL CORE DESCRIPTION

3 of 3

LOCATOR				SAMPLE NO.			SEC.
G	9	7	-6	P	C	-14	546
STATION#				OBSERVER			
				GPA			



silt 348-350
irregular band

375 end of section 5

silt

412 end of section

Note: overall lack of burrowing
- sample at 412 (2-3 cc) yielded
small quantity of 763µm (rare forams
& rare mineral grains)