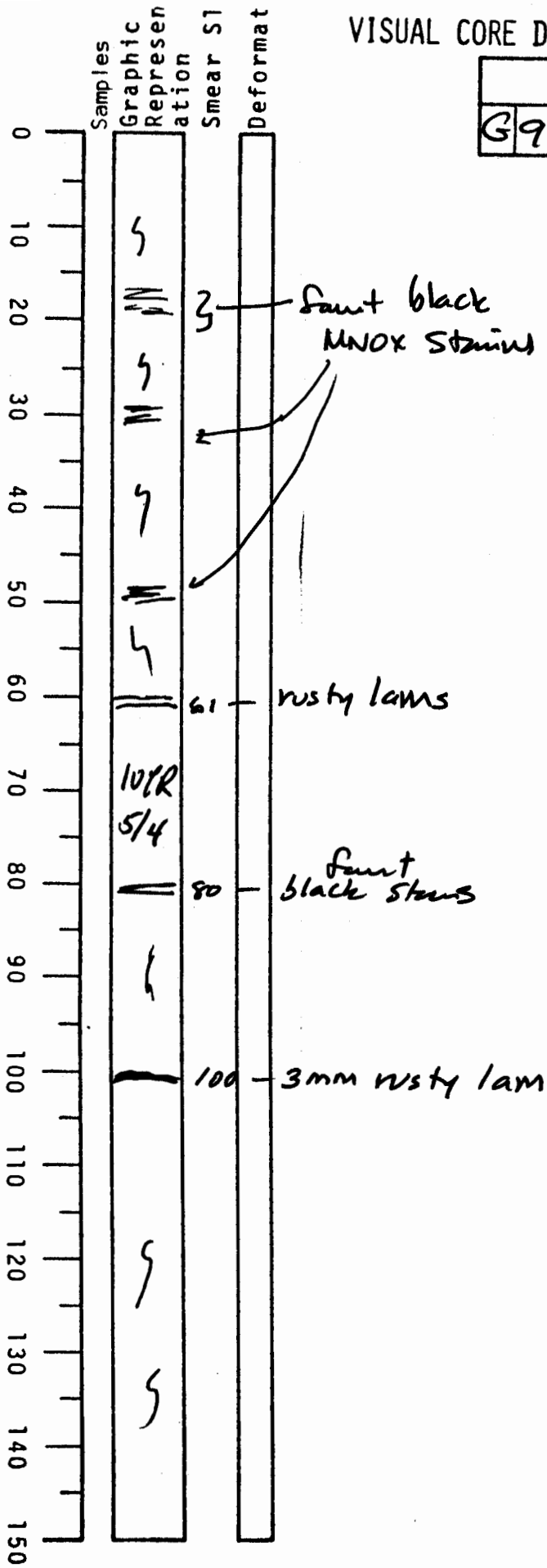


VISUAL CORE DESCRIPTION

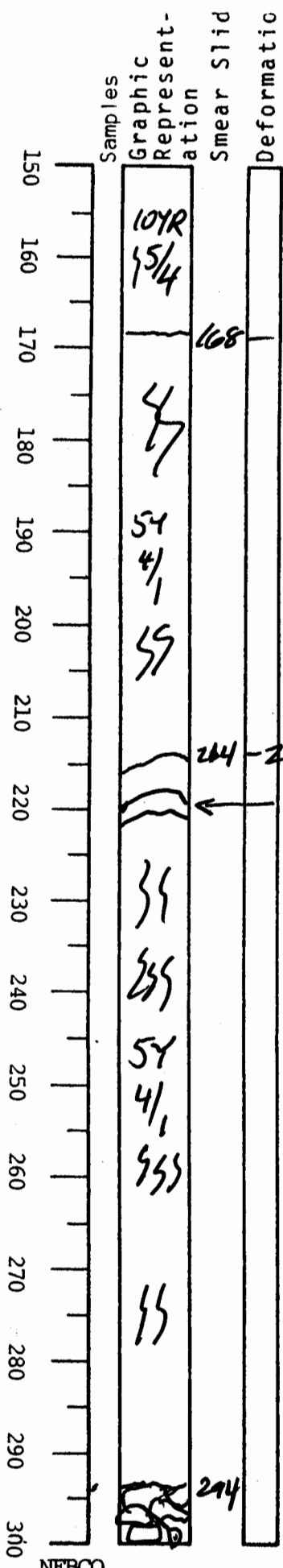
LOCATOR				SAMPLE NO.		SEC.
G97-6				PC	17	1/2
STATION#					OBSERVER	
					JED	



0-150
 dark yellowish bn
 foram-rich calc
 clay
 moderately burrowed
 10YR 5/4

VISUAL CORE DESCRIPTION

LOCATOR				SAMPLE NO.		SEC.
097-6				PC	17	34
STATION#					OBSERVER	
					JED	



150-168
~~to~~ dk yellowish bn
 foram calc clay like 0-150

168-219 olive gray clay
 highly burrowed
 forams common

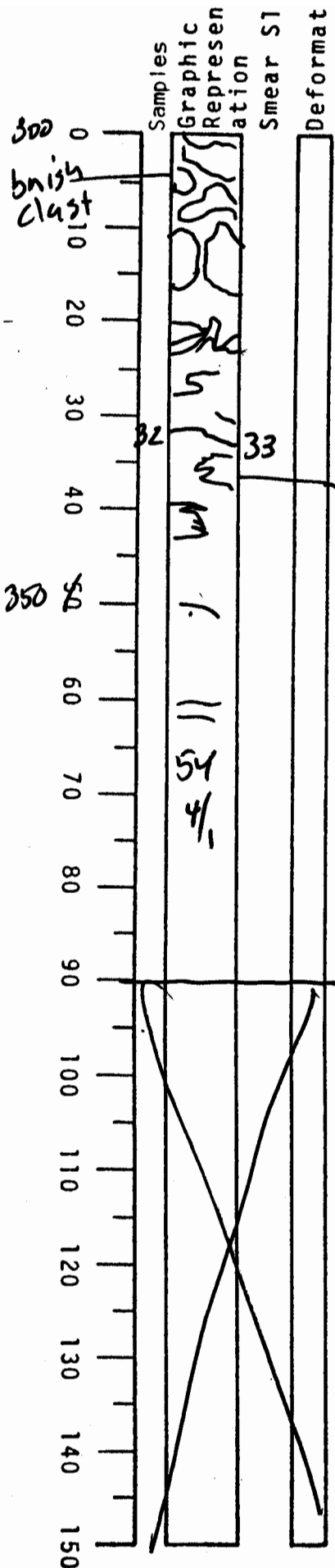
219 unburrowed
 olive gray
 gray 5YR 4/1
 219-220 brownish cast layer slightly
 dipping - unburrowed

220-294
 olive gray clay
 forams common
 moderately burrowed
 except highly burrowed
 230-260

294-300 appears
 to be mud clasts
 of various gray
 gray shades
 deformed

VISUAL CORE DESCRIPTION

LOCATOR				SAMPLE NO.		SEC.
0997-6		PC	17	5	26	
STATION#					OBSERVER	
					JED	



300-332 deformed large mud clasts of various gray shades below 20 flowage and folding

332 - 390 olive gray clay with darker gray burros and or stains that appear to show flowage and deformation

This interval may be a large clast(s)