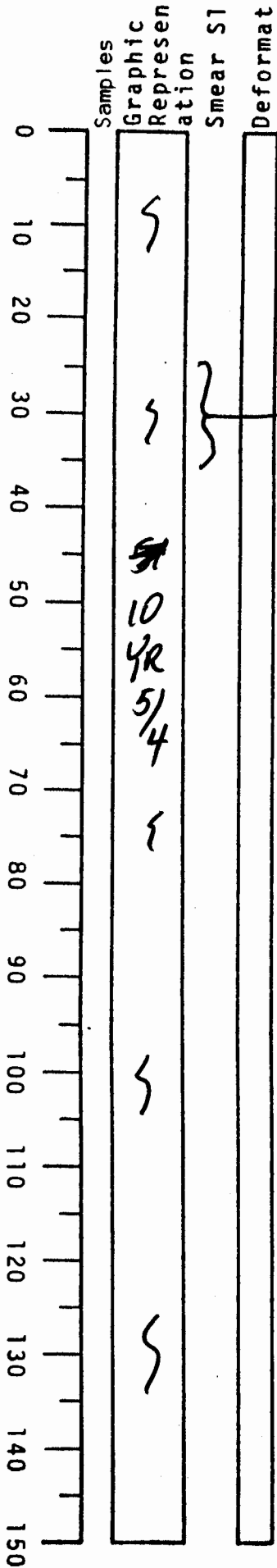


VISUAL CORE DESCRIPTION

LOCATOR				SAMPLE NO.			SEC.
B	9	7	-E	PC	18	142	
STATION#					OBSERVER		
					JSD		



0-150 (201)

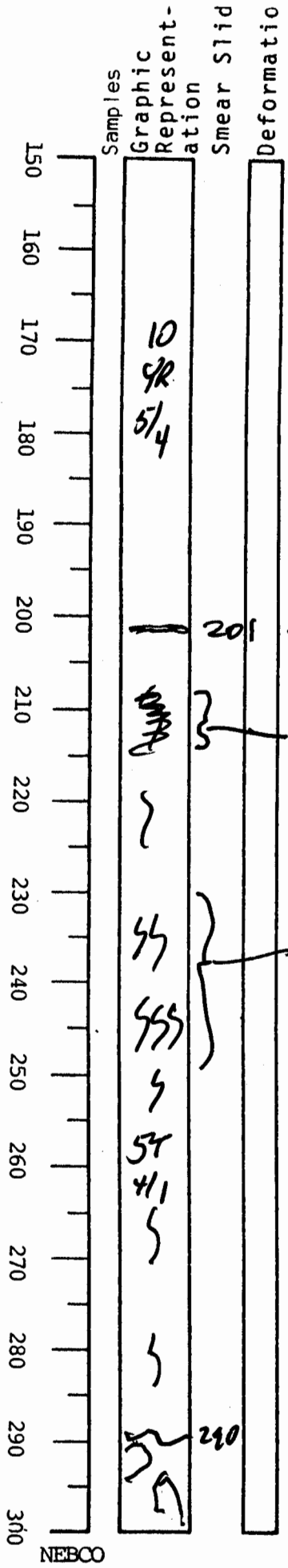
25-35 faint black 10YR 5/4 dark yellowish bn
MWOX
stems
Iron-rich calc
clay

Slight to
light to moderate burrowed

more bn in top
~~top~~ 40 cm then
gets lighter and
more gray below

VISUAL CORE DESCRIPTION

LOCATOR				SAMPLE NO.		SEC.
G	97	-	6	PC	18	344
STATION#				OBSERVER		
				JSD		



150-201

Same as 0-150

201 faint rust lamina
(rusty crust?)

208-213 bluish cast
from the brick
colored sediment

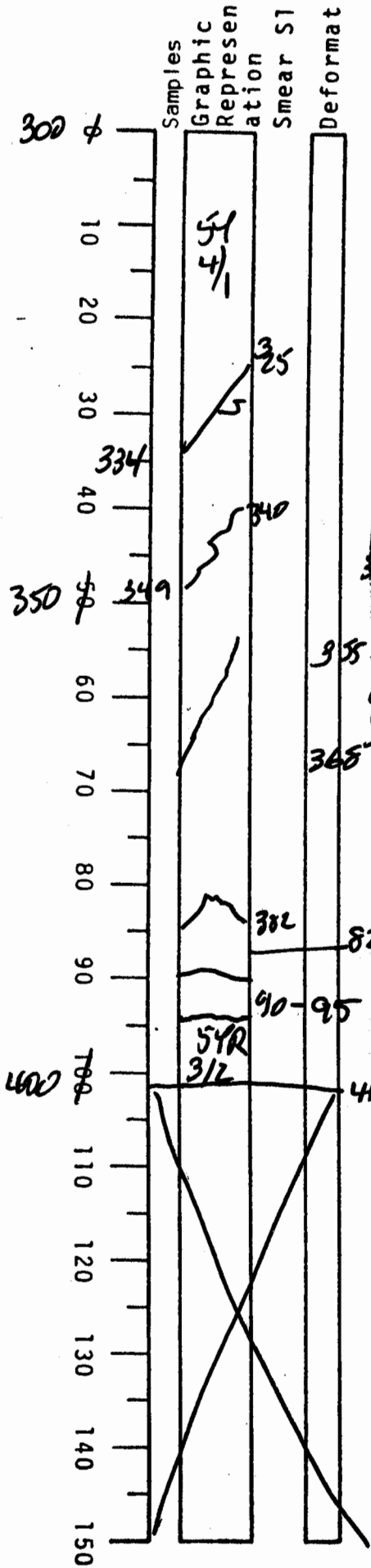
most
intense
burrows

201-290 olive gray
clay forams common
moderate to intense
burrowing
appears to be in
place to 290 -
NTD below

290-300 appears to
be part of disturbed
section below -
mud clasts? of
various gray shades

VISUAL CORE DESCRIPTION

LOCATOR				SAMPLE NO.		SEC.
G97	-	6		PC	18	546
STATION#					OBSERVER	
					JED	



325-334
steeply dipping
fault or glide
plane

340-49 dipping
deformed
black stain

355-368 subtle
dipping fault?

82-90 large angular
brown clast
grayish bn 5YR 3/2

412 base of core

90-95 slightly lighter clast?
grayish bn 5YR 3/2

95-412 grayish bn clay
5YR # 3/2

[NOTE: 290 TO BASE
APPEARS TO BE
MTD]

300 - 382 on
olive gray clay
5Y 4/1,
appears to be
displaced blocks
only no strong
deformation
seen except
glide planes
as noted