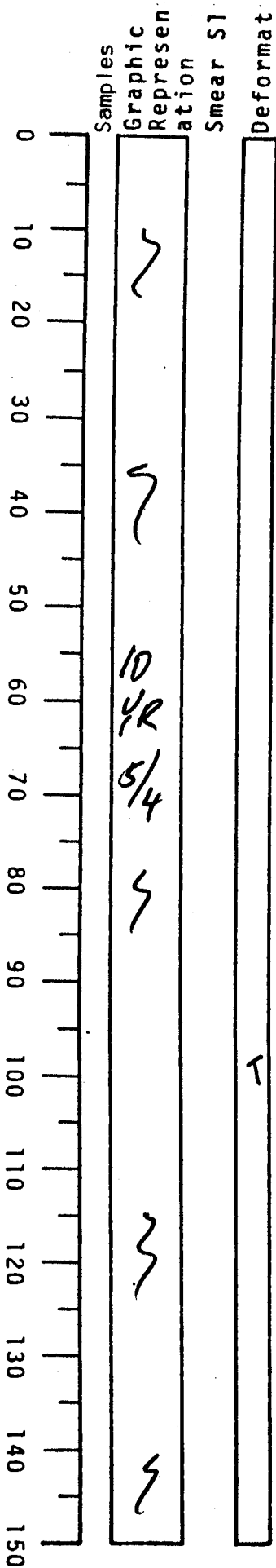


VISUAL CORE DESCRIPTION

LOCATOR				SAMPLE NO.		SEC.
097	-6			PC	19	182
STATION#				OBSERVER		
				JED		



0-150

dark yellowish brown
 foram-rich calc clay

slightly burrowed

darker bn in top 20cm

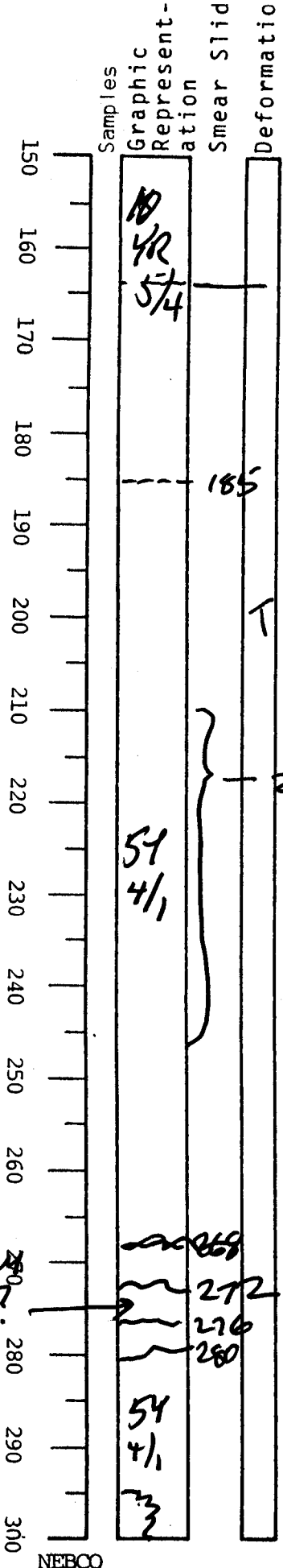
~~some~~
 rare faint ~~black~~ black

MnOx & Fe stains

VISUAL CORE DESCRIPTION

PC19

LOCATOR			SAMPLE NO.		SEC.
G97-6			PC	149	324
STATION#				OBSERVER	
				JED	



164 5mm rusty Fe laminae 150-~185

dk yellowish bn clay as in 0-10 persists down to about 185. grades from bn to olive gray 180-190.

check forams - similar to PC-20 boundary. & POSS. P/A boundary?

210-245 highly burrowed

185-~~210~~ 272 olive gray clay forams common moderate to intense burros seems in place to at least 268 (see belo)

med. gray clast?

272 irreg contact

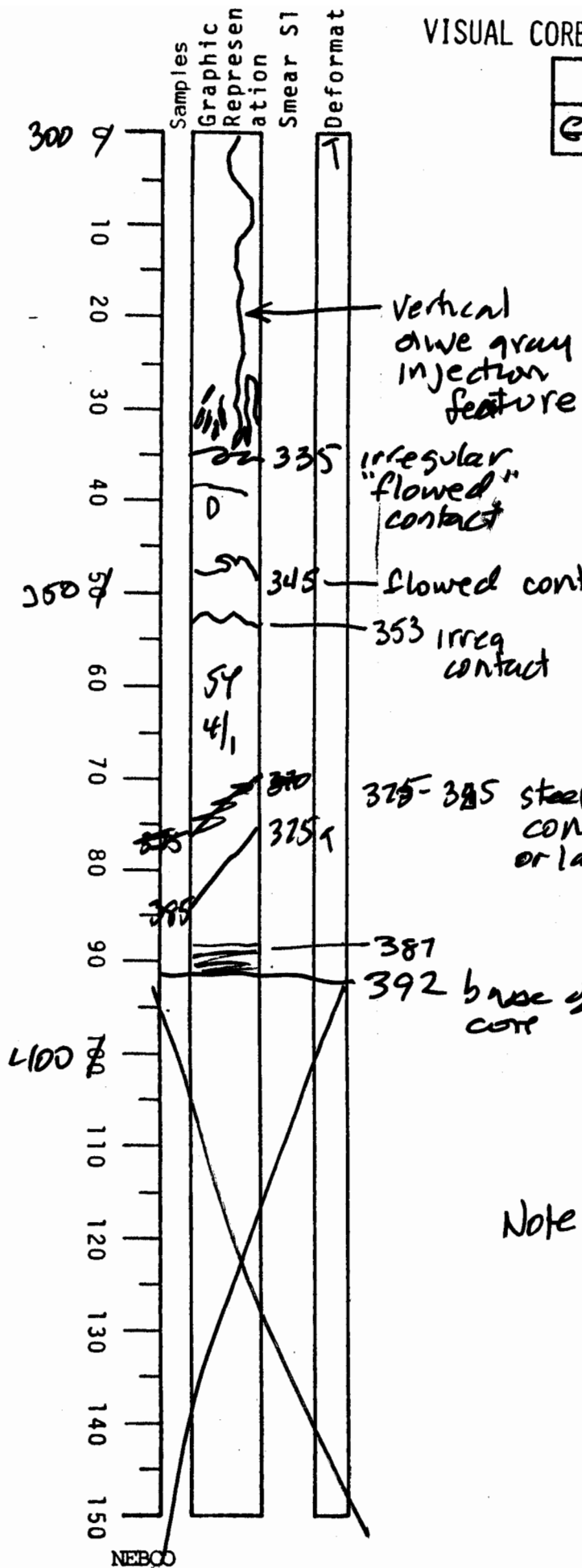
268-300 Somewhere around 268 is top of MTD disturbed unit (see sect. 5)

} disturbed subtle irregular contacts suggest clast boundaries(?)

NEBCO

VISUAL CORE DESCRIPTION

LOCATOR				SAMPLE NO.		SEC.
E97	-6			PC	1956	6
STATION#					OBSERVER	
					JED	



300-335

olive gray 5Y 4/1
disturbed clay

322-335

olive black 5Y 2/1
clast(?)

335-345 olive gray
5Y 4/1

345-353 olive black
internal

353-~~375~~ 375/85

375-385 steep dipping
contact
or layer

olive gray
clay
5Y 4/1

385-392 olive gray clay

387-392 numerous
black laminae or
color bands < 1mm
thick
horizontal

Note: This section shows
~~vertical~~ than vertical
cracks internally
look like vertical
shear fractures
(see working half)