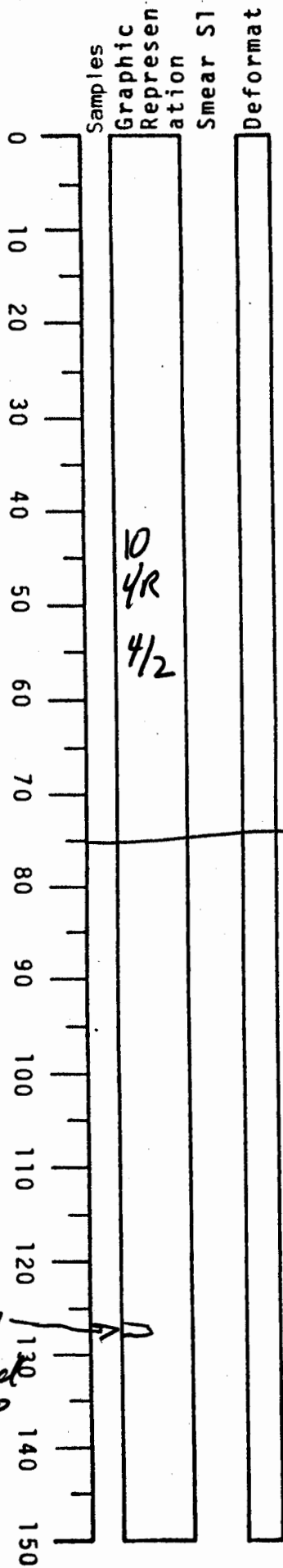


# VISUAL CORE DESCRIPTION

LOCATOR				SAMPLE NO.		SEC.	
9	9	7	-6	PC	-23	1	2
STATION#					OBSERVER		



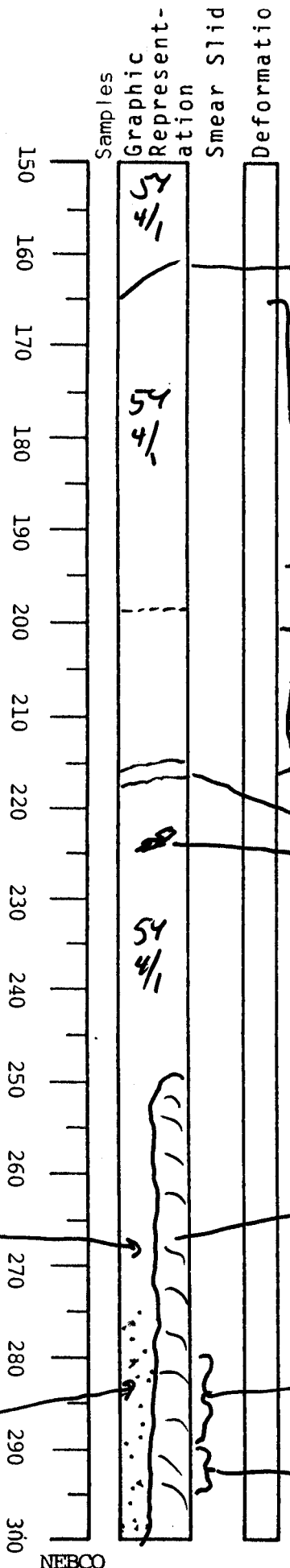
0 - ~150 dark yellowish brown calc clay with about forams moderately to slightly burrowed grades into olive gray clay at 150

end of section I

VISUAL CORE DESCRIPTION

LOCATOR				SAMPLE NO.			SEC.
G	9	7	-	P	C	-	2334

STATION#	OBSERVER
	<del>City</del>
	JED



150-160 olive gray clay - in place

160-165 faint dipping lamina - may be top of MTD below?

160-195 lighter olive gray highly burrowed interval

200-215 slightly browner olive gray clay no real evidence of disturbance burrowed

215 possible dipping contact

215-216 granoch band (faint)

223-225 - possible deformed burrow

216-249 olive gray clay - scattered burros - no obvious deformation

249 to base 300 strange vertical contact stacked laminated exotic colored clasts on right &

olive gray clay grading down to silt on left [possibly coring disturbance, but probably real]

color predominately pale brown 5YR 5/2 gray laminae in between

280-290 moderate brown layer 5YR 4/4

290-295 298-299) medium gray NS clasts

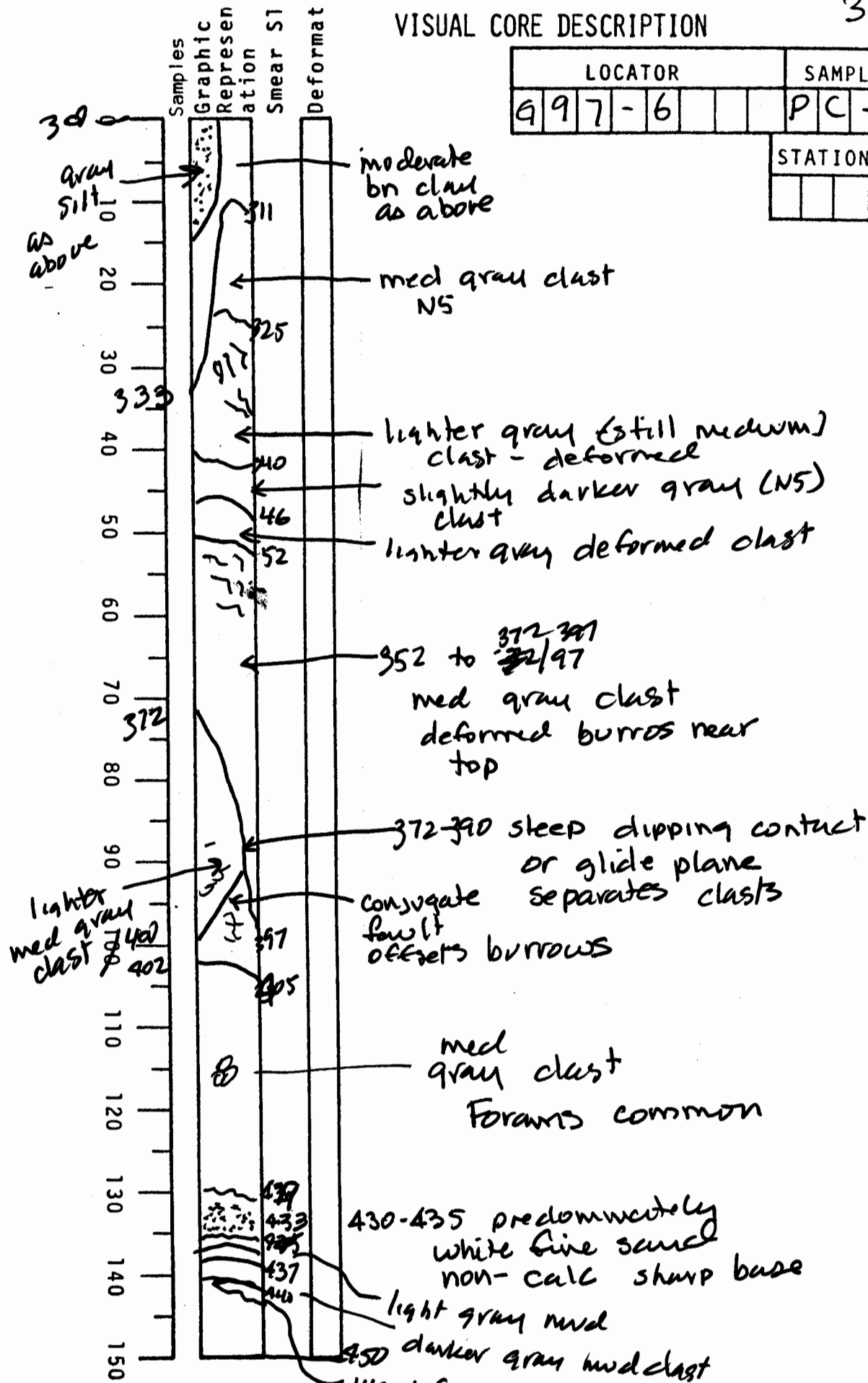
smooth olive clay

gray silt and silty clay

NEBCO

VISUAL CORE DESCRIPTION

LOCATOR				SAMPLE NO.			SEC.
9	9	7	-	P	C	-	2356
STATION#						OBSERVER	
						G. J. ED	



140 deformed gray mud clast  
 140 - base 150 moderate brown silt 4/4  
 clay (like above) laminated by gray laminae