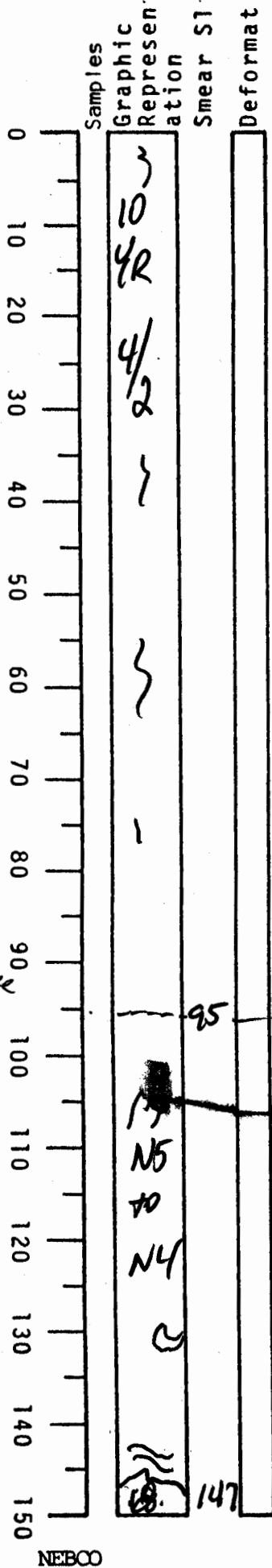


VISUAL CORE DESCRIPTION

LOCATOR				SAMPLE NO.		SEC.
G	9	7	-	P	C	102
STATION#					OBSERVER	
					JED	



90-93cm
AMS sample
8117198

95 — gradual
contact

flowage?

147

147-150
see next
sect.

0-90 cm

dark yellowish bn
clay calc-rich
fossil rich
burrowed

becomes more gray
below 75 and
grades to gray ~95

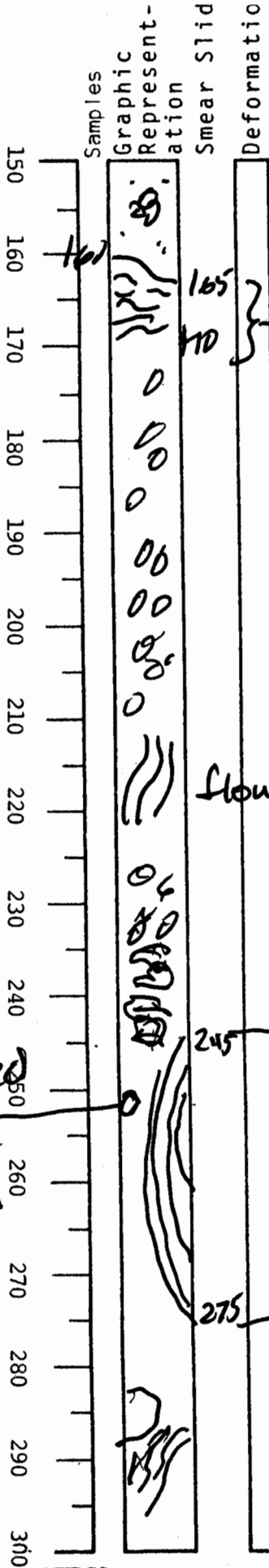
95-147

medium (N5)
to medium dark (N4)
gray clay
some hints of
flowage and
deformation -
this unit may
be part of MTD
below

VISUAL CORE DESCRIPTION

LOCATOR				SAMPLE NO.		SEC.
G97	-6			PC	26	324

STATION#	OBSERVER
	JLB



147-165
gray sandy
foraminiferal
clay
looks like a 150 to 377
clast

is deformed
and folded
medium (N5)
to med dark (N4)
gray clays

190-210
deformed
mud clasts
med light
gray (N6)
to med dk gray
N4

zones of deformed
mud clasts
folds &
dipping,
flowed
layers

flowage
deformed
flowed
mud clasts

& as shown
AN MTD

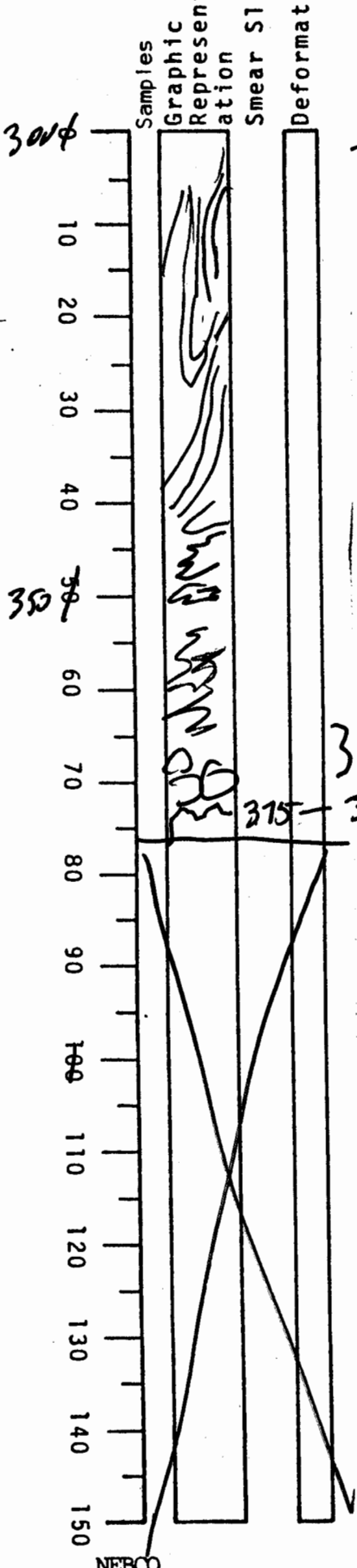
245-
275
large fold

indurated
clast
2.5x2cm
greenish
gray with
sand
grains &
forams

flowage and
large clasts

VISUAL CORE DESCRIPTION

LOCATOR				SAMPLE NO.		SEC.
G97	-	6		PC	26	5
STATION#					OBSERVER	
					JSD	



flowage and folding

See previous sections

deformed mud clasts

3 clasts - dk gray and brownish gray

375-379 tight bluish gray 5B7/1 mud clast

Highly deformed MTD