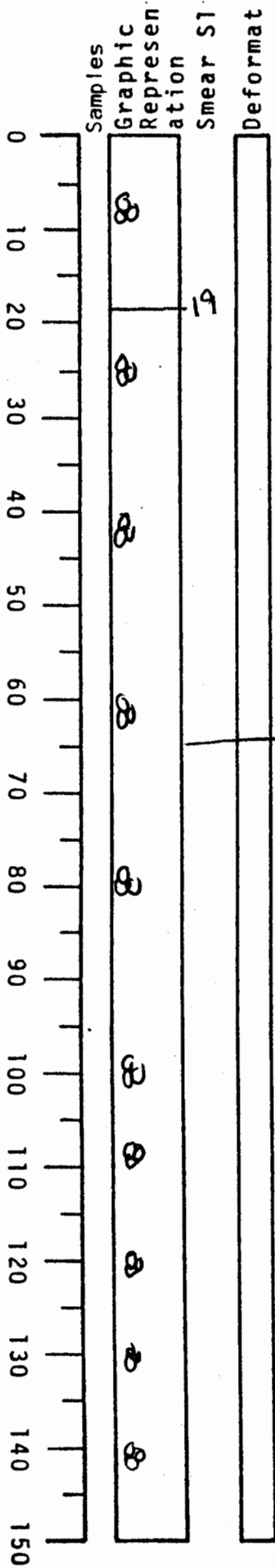


VISUAL CORE DESCRIPTION

1 of 3

LOCATOR				SAMPLE NO.		SEC.
6	9	7	-	6	PC-27	142
STATION#					OBSERVER	
					GIR	



0-19 dark yellowish brown clay 10YR 4/2
 Soupy - structure less
 Forams abundant

manganese staining 15-19
 19-240

~~19-240~~ ~~19-225~~ ~~19-250~~ Light olive gray 5Y 5/2
 Forams abundant
 rare burrowing - becomes more moderate - increases towards 225
 almost no burrowing 19-150.

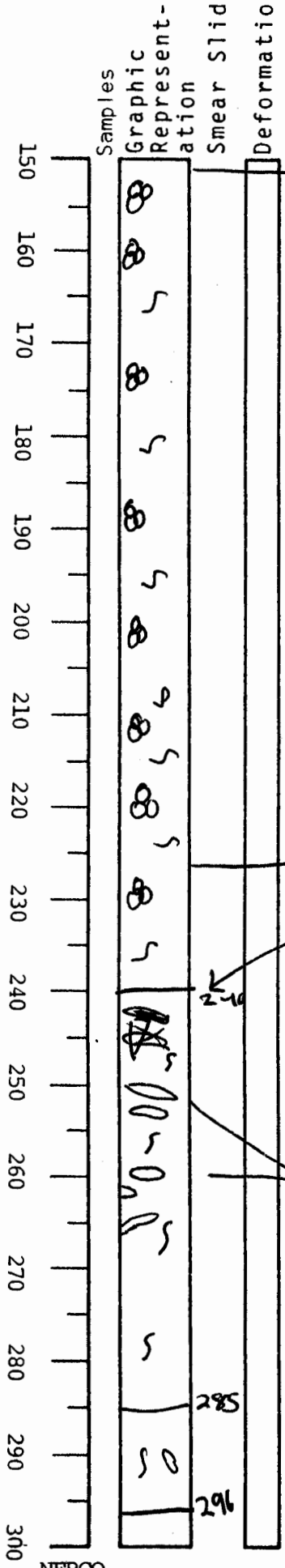
end of section 1

Some burrows filled w/ dark gray mud.
 burrow size 1/2 cm to 3 cm. (not very distinct in general).

Looks like ~~hem.~~ hemipelagic mud.

VISUAL CORE DESCRIPTION

LOCATOR				SAMPLE NO.			SEC.
G	9	7	-	P	C	-	2734
STATION#						OBSERVER	
						Gib	



end of Section 2

227 - end of section 3
not distinct contact

240 - 285 light olive gray SY 5/2 Clay
Increased burrowing

burrows 1cm - 5cm.

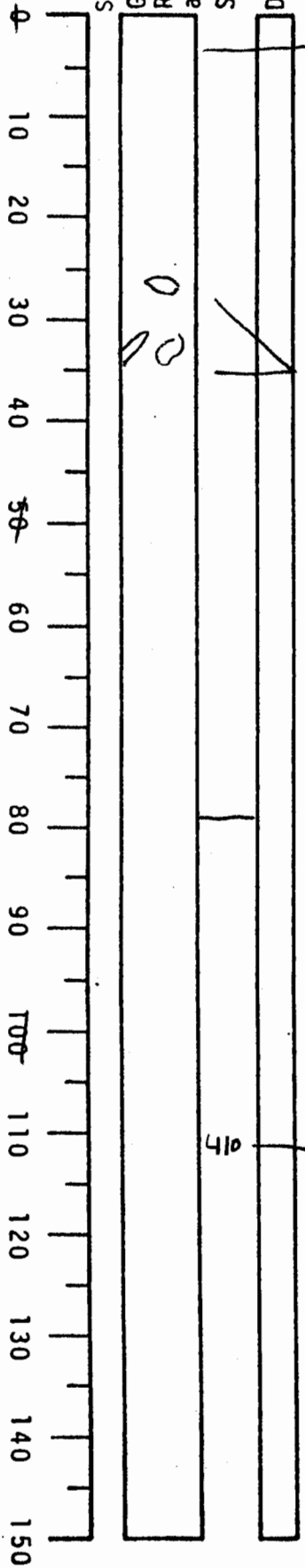
285 - 296 brownish gray SY R 4/1 clay
one large (1/2 cm x 2 cm.) burrow filled w/
like grey clay.
gradational contact

VISUAL CORE DESCRIPTION

3 of 3

LOCATOR				SAMPLE NO.		SEC.
9	9	7	-6	PC-	275+6	
STATION#				OBSERVER		
				Gita		

Samples
Graphic
Represent
ation
Smear S
Deformat



303 end of section 4
296-410

olive gray 5Y 4/1 clay
structureless
moderate burrowing

325-325 * medium-large burrows
filled w/ brownish gray clay
(3-4 cm)

most other burrows filled w/ dark gray clay

328 - end of section 5

no distinct burrows

410 end of section 6 + core

In general - whole core looks
like hemipelagic clay.