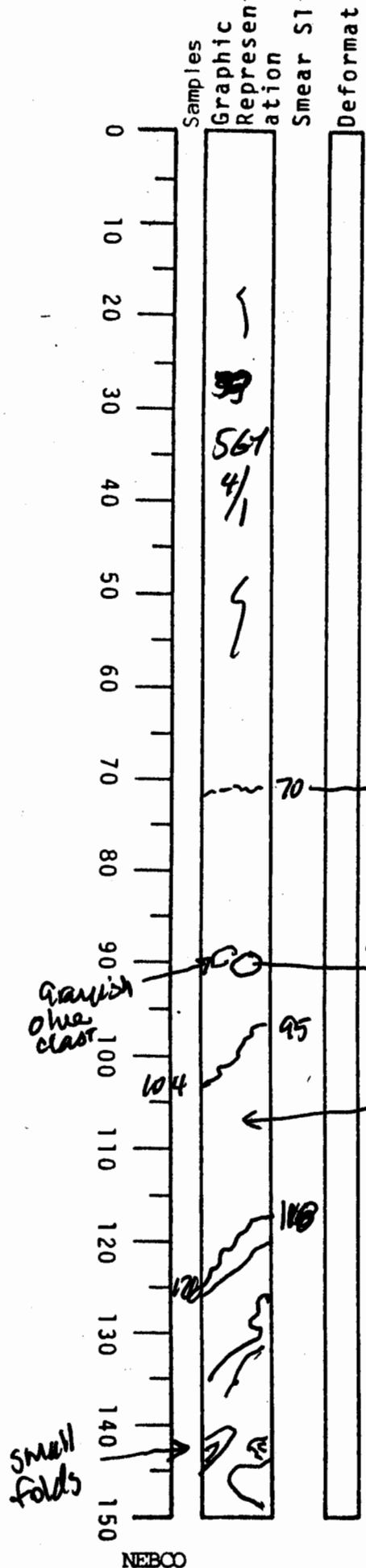


VISUAL CORE DESCRIPTION

LOCATOR				SAMPLE NO.		SEC.
G97-6				PC	37	142
STATION#					OBSERVER	
					JED	



0 - ~65
 olive gray to
 dark greenish gray
 Silty clay
 soupy
 forams abdt
 not silty in upper 20cm
 slight burrows

Contact ~ 70 cm
 exact
 contact
 uncertain ~ 65 to base of core

is deformed
 gray mud and
 mud clasts of
 various shades
 of gray

grayish olive 104 5/4
 olive gray 51 3/2
 medium gray N5

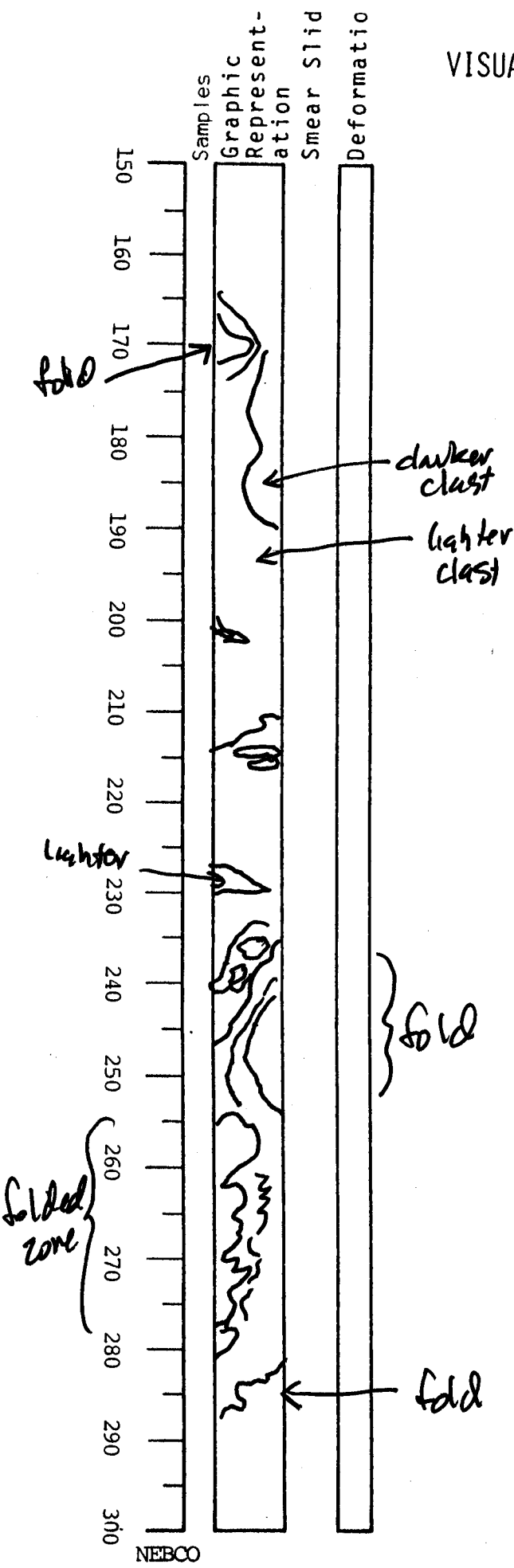
This is an MTD
 slump/debris flow

Major structures
 shown

VISUAL CORE DESCRIPTION

34

LOCATOR				SAMPLE NO.		SEC.
G	9	7	-	P	C	37
STATION#					OBSERVER	
					JED	

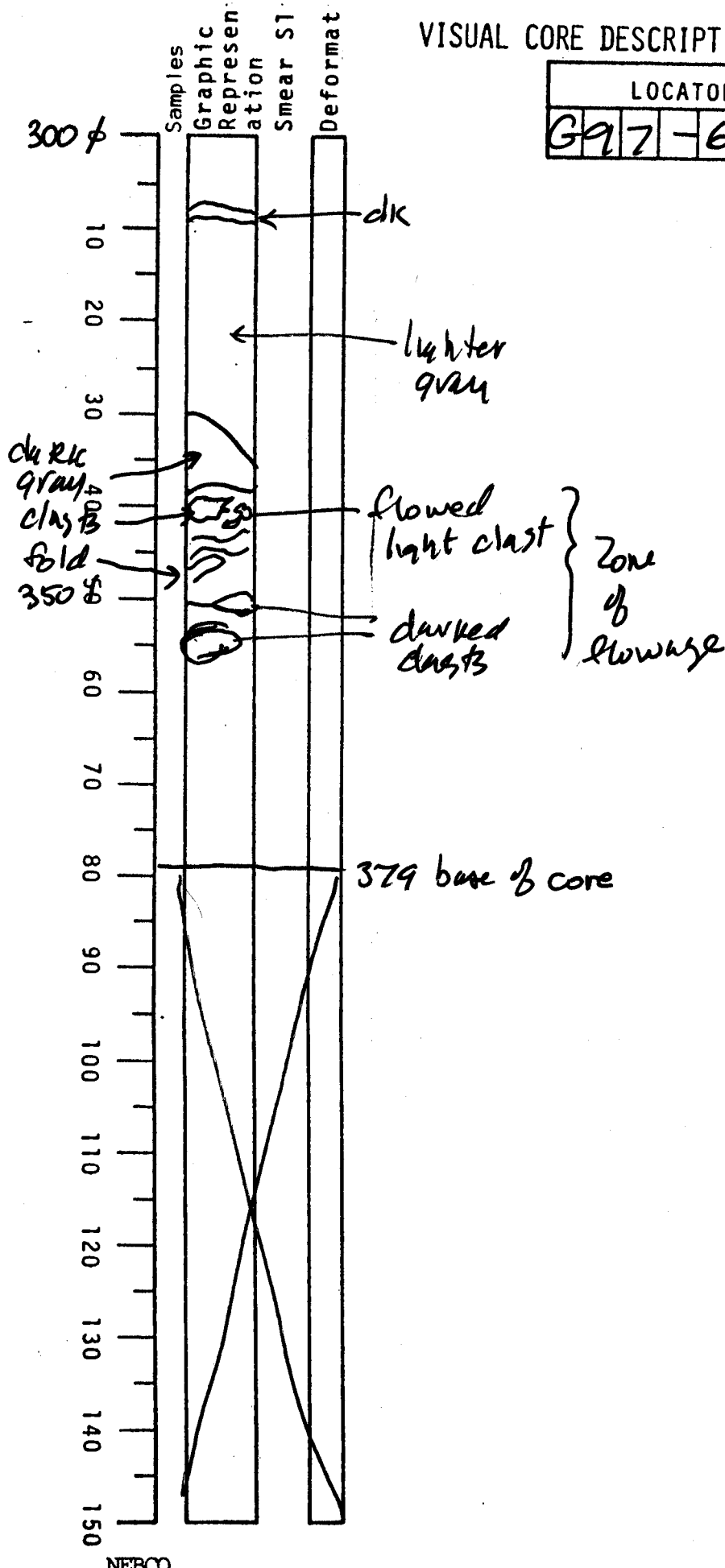


150 - 300
 Deformed, folded
 gray clasts
 major
 structures
 shown

NEBCO

VISUAL CORE DESCRIPTION

LOCATOR				SAMPLE NO.		SEC.
G97	-6			PC	375	
STATION#					OBSERVER	
					ED	



deformed
folded
gray clasts
and
clasts