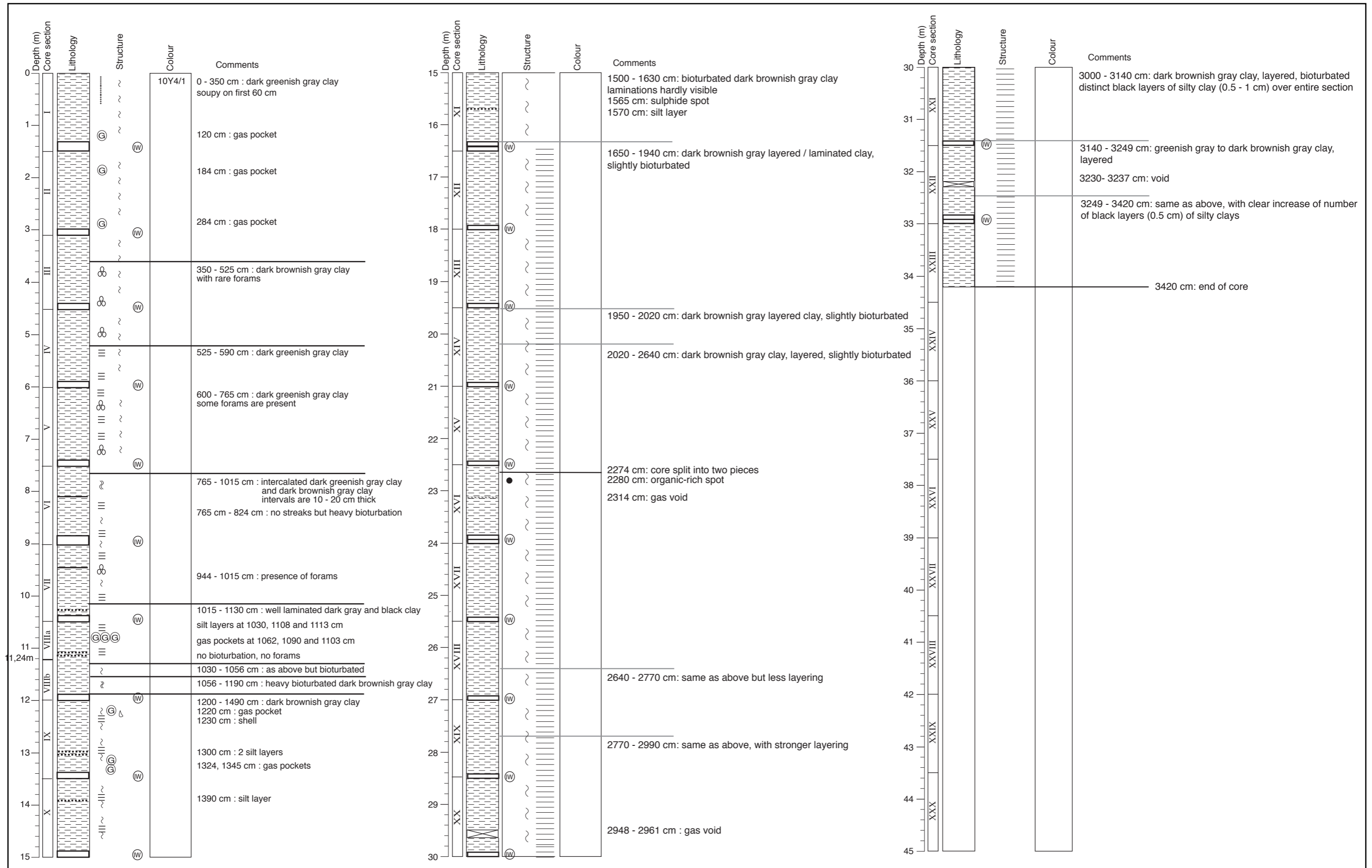
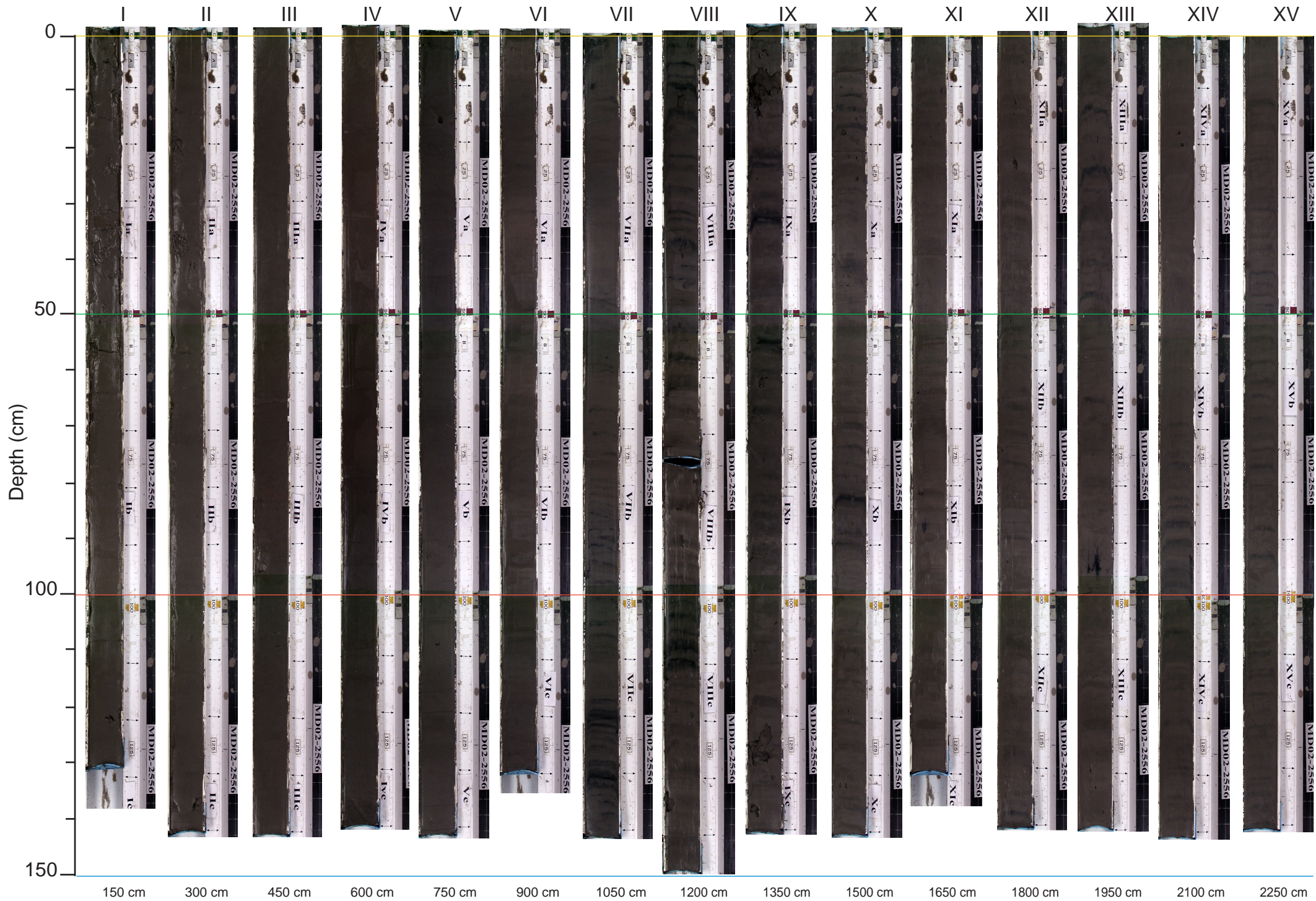


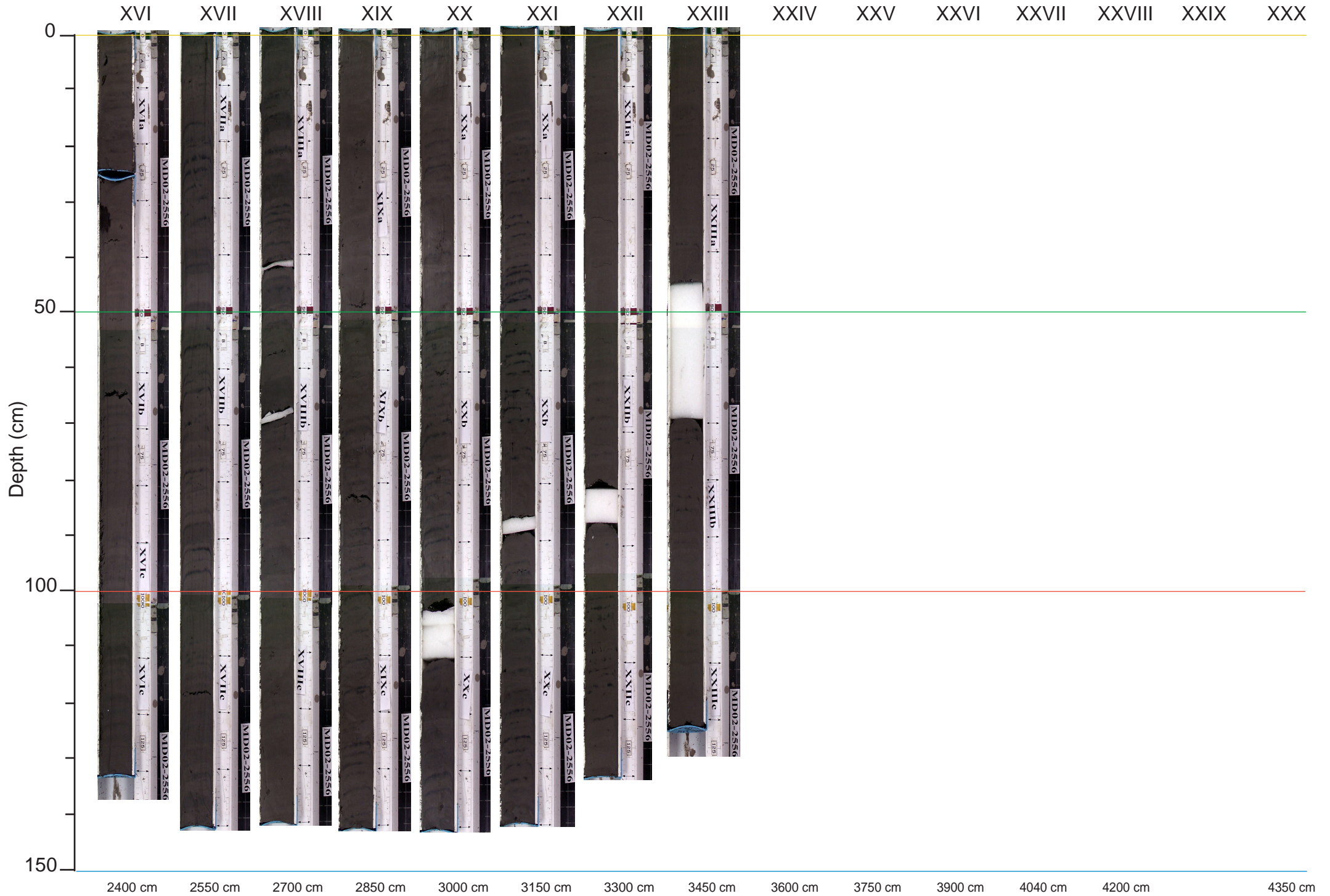
Core description



MD02-2556 (sections I to XV)



MD02-2556 (sections XVI to XXIII)



Day: 10/07/02
Latitude: 27°46.98 N
Water depth: 654 m

GMT time: 05:04
Longitude: 91°28.65 W
Location: Bush Hill Basin

Core number: **MD02-2556**

Corer type: Calypso core
Corer length: 41.60 m
Core length: 34.25 m

Observations

Corer condition:

Corer broken at 2275 cm (section XVI a and b), liner pulled over between section VIIIa and b

Core condition:

Sections and Sampling

Number of sections recovered and conditions:

23 sections of 1.5m were recovered; the last section measures 125 cm, a section of 10 cm was taken at the base of every 1.5 m section

Onboard sampling and post cruise processing:

- Due to downloading problems, no colour reflectivity data available
- the 10 cm sections were taken for pore water analysis, (microbiology, and SO₄⁻, Cl⁻, CH₄, ¹⁴C, DIC) (MBARI, Univ.Tokyo)
- 1 bag of core top sediment was taken
- USGS core measurements and activities : Elec. Resist ; Vane Shear , water content, (USGS-WH), Headspace Gas (USGS-Menlo Park), Thermal conductivity (Univ.Victoria)
- Both the working and archive halves will be stored at Texas A&M University.
- 3 bags of sediment were recovered: 1 core catcher, 1 core cutter, 1 top surface
- MST magnetic susceptibility, gamma ray attenuation and p-wave measurements were made downcore, at a resolution of 2 cm. Colour measurements were taken every 2 cm.

Summary of physical and sedimentological observations

Dominant lithologies: dark greenish to dark brownish gray clay with some foraminifers. Gas pockets are present throughout the core.

Minor lithologies: